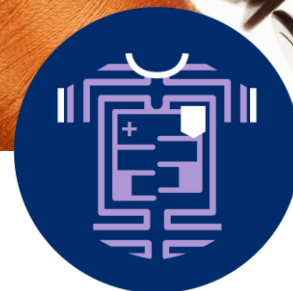




# GS1 EDI

Inventory report (INVRPT) for the fashion sector

*Release 3.0, Ratified, 27 October 2017*



## Document Summary

Document Item	Current Value
Document Name	GS1 EDI
Document Date	27 October 2017
Document Version	3.1
Document Status	Ratified
Document Description	Inventory report (INVRPT) for the fashion sector

## Log of Changes

Release	Date of Change	Changed By	Summary of Change
2.1	19 October 2012	GS1 Germany	First version.
3.0	28 October 2016	Jan Westerkamp Sebas van Zundert	<ul style="list-style-type: none"> <li>- Combined all INV-QTY segments to one segment</li> <li>- Added Buyer's item number</li> <li>- Added Buyer's item description</li> <li>- Added Reason code</li> <li>- Added Reason description</li> <li>- Added Transaction type</li> <li>- Added GLN of place of receipt</li> <li>- Added GLN of place of delivery</li> <li>- Added inventory type code. Also the value 78 (inventory movement advice) is allowed in data element 1001 in BGM segment.</li> </ul>
3.1	27 October 2017	GS1 Netherlands, Reinier Prenger	<p>The following corrections were made in Chapter 5, INVRPT message example:</p> <ul style="list-style-type: none"> <li>- The data in the UNB segment was before the date in the report date (DTM+366).</li> <li>- In the CTA segment there was an apostrophe in the middle of the text, causing an end of segment.</li> </ul>

## Disclaimer

GS1, under its IP Policy, seeks to avoid uncertainty regarding intellectual property claims by requiring the participants in the Work Group that developed this document to agree to grant to GS1 members a royalty-free license or a RAND license to Necessary Claims, as that term is defined in the GS1 IP Policy. Furthermore, attention is drawn to the possibility that an implementation of one or more features of this Specification may be the subject of a patent or other intellectual property right that does not involve a Necessary Claim. Any such patent or other intellectual property right is not subject to the licensing obligations of GS1. Moreover, the agreement to grant licenses provided under the GS1 IP Policy does not include IP rights and any claims of third parties who were not participants in the Work Group.

Accordingly, GS1 recommends that any organization developing an implementation designed to be in conformance with this Specification should determine whether there are any patents that may encompass a specific implementation that the organization is developing in compliance with the Specification and whether a license under a patent or other intellectual property right is needed. Such a determination of a need for licensing should be made in view of the details of the specific system designed by the organization in consultation with their own patent counsel.

THIS DOCUMENT IS PROVIDED "AS IS" WITH NO WARRANTIES WHATSOEVER, INCLUDING ANY WARRANTY OF MERCHANTABILITY, NONINFRINGEMENT, FITNESS FOR PARTICULAR PURPOSE, OR ANY WARRANTY OTHERWISE ARISING OUT OF THIS SPECIFICATION. GS1 disclaims all liability for any damages arising from use or misuse of this Standard, whether special, indirect, consequential, or compensatory damages, and including liability for infringement of any intellectual property rights, relating to use of information in or reliance upon this document.

GS1 retains the right to make changes to this document at any time, without notice. GS1 makes no warranty for the use of this document and assumes no responsibility for any errors which may appear in the document, nor does it make a commitment to update the information contained herein.

## Table of contents

<b>Introduction</b> .....	<b>4</b>
<b>1 Business terms</b> .....	<b>7</b>
<b>2 Message structure chart</b> .....	<b>9</b>
<b>3 Segments description</b> .....	<b>10</b>
<b>4 Segments layout</b> .....	<b>15</b>
<b>5 INVRPT message example</b> .....	<b>38</b>

## Introduction

The Inventory report (INVRPT) is based on the standard from GS1 Germany and on EANCOM 2002 S3.

## Preamble

The aim of the document on hand is to offer documentation describing the exchange of inventory data between business partners.

This document is based on the CFB-Connecting Fashion Business messages of GS1 Germany. In consultation with the Dutch fashion industry additional requirements have been added. The basis of this elaboration is the international standard EANCOM® 2002. The message type INVRPT 007 is used to transmit relevant data. GEFEG.FX (Gefeg GmbH, Berlin) was used as the documentation tool.

Please be aware that this document does not replace the complete specifications in the original chapters or other relevant instructions within the EANCOM® 2002 documentation. Instead, it deals with the description of segments, data elements and codes to be used for a specific task.

GS1 Germany thanks all experts who contributed significantly to these guidelines with knowledge from their daily business.

## Conventions

This brochure offers different ways to start:

**Section 1, 'Business Terms'**, is a table which links directly to the sequence numbers of the segments.

**Section 2, 'Message Structure Chart'**, is a list of all used segments in the same sequence as they are defined in the EANCOM® message. In general, for each piece of information one single segment is provided. Exceptions may arise when the occurrence of a segment is limited and can contain alternative information (e.g. segment BGM).

**Section 3, 'Segments Description'**, is a brief summary of the use of each segment.

In **Section 4, 'Segments Layout'**, an illustration that has been chosen to match the business terms (data from the in-house application) with the elements from the EANCOM® syntax.

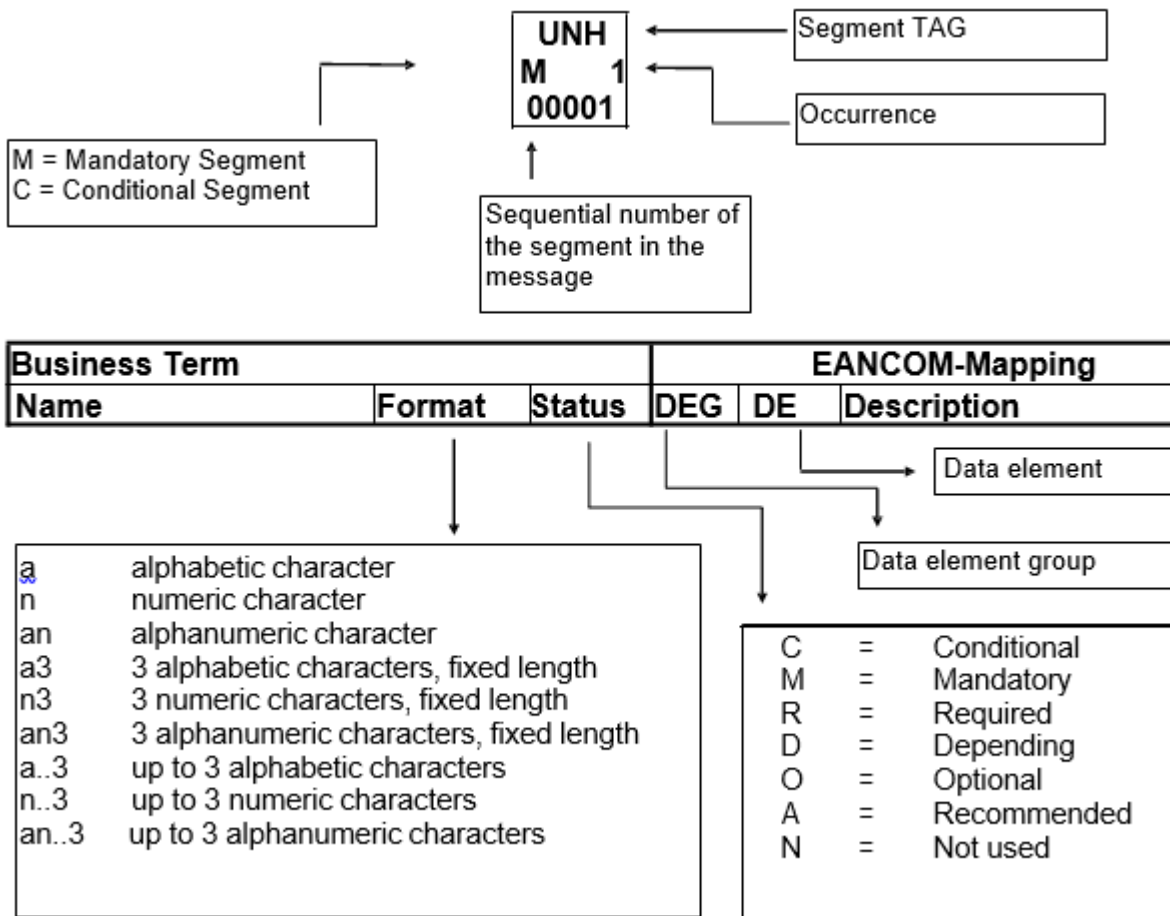
*Note on section 4:*

An additional column (GER) to provide a German status has been added to the layouts. An entry indicates that the recommended status differs from the EANCOM® status. If the recommended status is weaker than the EANCOM® status, the data element (or, if only one term exists the entire segment) can be omitted.

In general, code names are presented in red; these must to be understood as restricted and should not be changed/modified without bilateral agreement with the partner. If codes are given as examples, they are represented in blue (e.g., measurements). In this case, all codes of the relevant code list can be used.

**Section 5, 'Example(s)'**, provides at least one message example with comments. Please note that, for technical reasons, the examples can contain component data element separators, which would otherwise be represented as data element separators in the original messages.

The following conventions apply to this brochure:



## Message structure

### Heading section

Specification of message sender and receiver as well as reporting period.

### Detail section

Specification of GTIN to identify goods and their quantity.

### Summary section

The summary section contains no data and has syntactical reasons.

# 1 Business terms

Term	EANCOM-Segment			Data element	
	No.	Segment	SG	DEG	DE
Acknowledgement request	2	UNB			0031
Address for reverse routing	2	UNB		S002	0008
Adjustment of inventory quantity	17	QTY	SG9\SG11	C186	6060
Application reference	2	UNB			0026
Buyer's item description	15	IMD	SG6\SG8	C273	7008
Buyer's item number	14	PIA	SG6\SG8	C212	7140
Change in business model	17	QTY	SG9\SG11	C186	6060
Character set	2	UNB		S001	0001
Component data element separator	1	UNA			UNA1
Consignment inventory, method	16	INV	SG9\SG11		4503
Consignment stock	17	QTY	SG9\SG11	C186	6060
Creation date	5	DTM		C507	2380
Current consignment inventory	17	QTY	SG9\SG11	C186	6060
Current inventory	17	QTY	SG9\SG11	C186	6060
Data element separator	1	UNA			UNA2
Date of inventory report	6	DTM		C507	2380
Decimal notation	1	UNA			UNA3
Delivered quantity	17	QTY	SG9\SG11	C186	6060
Document Number	4	BGM		C106	1004
EANCOM	2	UNB			0032
End of the transmission file, Number of messages or message groups	21	UNZ			0036
File creation date	2	UNB		S004	0017
File creation time	2	UNB		S004	0019
GLN place of delivery	18	LOC	SG9\SG11	C517	3225
GLN place of receipt	18	LOC	SG9\SG11	C517	3225
Goods received quantity	17	QTY	SG9\SG11	C186	6060
GTIN Article identification	13	LIN	SG9	C212	7140
Identification of the receiver of the transmission file	2	UNB		S003	0010
Identification of the sender of the transmission file	2	UNB		S002	0004
Interchange control reference, beginning	2	UNB			0020
Interchange control reference, end	21	UNZ			0020
Inventory movement direction	16	INV	SG9\SG11		4501
Inventory reporting party 1	11	NAD	SG2#3	C082	3039

Term	EANCOM-Segment			Data element	
	No.	Segment	SG	DEG	DE
Inventory type code	4	BGM		C002	1001
Inventory withdrawal quantity	17	QTY	SG9\SG11	C186	6060
Line item number	13	LIN	SG9		1082
Message reference number	3	UNH			0062
Number of invoice	9	RFF	SG1	C506	1154
Number of segments in the message	20	UNT			0074
Out of inventory quantity	17	QTY	SG9\SG11	C186	6060
Outstanding quantity	17	QTY	SG9\SG11	C186	6060
Password interchange	2	UNB		S005	0022
Process variant, coded	4	BGM		C002	1000
Quantity moved between outlets	17	QTY	SG9\SG11	C186	6060
Quantity returned by a consumer	17	QTY	SG9\SG11	C186	6060
Reason code	19	STS	SG9\SG11	C556	9013
Reason description	19	STS	SG9\SG11	C556	9012
Release character	1	UNA			UNA4
Reporting period, end	8	DTM		C507	2380
Reporting period, start	7	DTM		C507	2380
Reserved for future use	1	UNA			UNA5
Return to manufacturer	17	QTY	SG9\SG11	C186	6060
Routing address	2	UNB		S003	0014
Sales quantity	17	QTY	SG9\SG11	C186	6060
Segment terminator	1	UNA			UNA6
Subdivision: Men's Department	12	CTA	SG2\SG4	C056	3413
Supplier/message receiver identification	10	NAD	SG2	C082	3039
Syntax version	2	UNB		S001	0002
Test indicator	2	UNB			0035
Transaction type	17	QTY	SG9\SG11	C186	6063







<b>QTY</b> - M 1	- <b>Current inventory</b> Definition Actual stock: The current stock on hand, undamaged, total quantity in account and available at stock at the time of the report. This quantity must always been reported, even if the value is zero (0).
<b>LOC</b> - C 1	- <b>GLN location of delivery or location of receipt</b> This segment is used to provide the GLN of location of delivery or GLN of location of receipt, if applicable.
<b>STS</b> - C 1	- <b>Reason code and description</b> This segment is used to give a reason for the inventory update, if applicable
<b>SG11</b> - C 9999	- <b>INV-QTY</b>
<b>INV</b> - M 1	- <b>Inventory movement direction</b> This segment is used to provide movement information and inventory results.
<b>QTY</b> - M 1	- <b>Current consignment inventory</b> Definition Actual CONSIGNMENT stock: The current stock of consignment goods on hand, undamaged, total quantity in account and available at stock at the time of the report.
<b>LOC</b> - C 1	- <b>GLN location of delivery or location of receipt</b> This segment is used to provide the GLN of location of delivery or GLN of location of receipt, if applicable.
<b>STS</b> - C 1	- <b>Reason code and description</b> This segment is used to give a reason for the inventory update, if applicable
<b>SG11</b> - C 9999	- <b>INV-QTY</b>
<b>INV</b> - M 1	- <b>Inventory movement direction</b> This segment is used to provide movement information and inventory results.
<b>QTY</b> - M 1	- <b>Inventory withdrawal quantity</b> Definition Inventory withdrawal quantity: Quantity which has been withdrawn from inventory to supply the outlets since the last inventory report. Adjustment quantities like return quantities from outlets and returns to suppliers are not included in this quantity. Inventory withdrawal quantities can be used for forecasting purposes.
<b>LOC</b> - C 1	- <b>GLN location of delivery or location of receipt</b> This segment is used to provide the GLN of location of delivery or GLN of location of receipt, if applicable.
<b>STS</b> - C 1	- <b>Reason code and description</b> This segment is used to give a reason for the inventory update, if applicable
<b>SG11</b> - C 9999	- <b>INV-QTY</b>
<b>INV</b> - M 1	- <b>Inventory movement direction</b> This segment is used to provide movement information and inventory results.
<b>QTY</b> - M 1	- <b>Outstanding quantity</b> Definition Outstanding quantity: The total of advised orders, which is not yet delivered physically or received by buyer.
<b>LOC</b> - C 1	- <b>GLN location of delivery or location of receipt</b> This segment is used to provide the GLN of location of delivery or GLN of location of receipt, if applicable.
<b>STS</b> - C 1	- <b>Reason code and description</b> This segment is used to give a reason for the inventory update, if applicable
<b>SG11</b> - C 9999	- <b>INV-QTY</b>
<b>INV</b> - M 1	- <b>Inventory movement direction</b> This segment is used to provide movement information and inventory results.

<b>QTY</b> - M 1	- <b>Out of inventory quantity</b> Definition Out of inventory quantity: Total of quantity requests of the outlets during the previous inventory period (in relationship store - outlets) that could not be satisfied, i.e. the current inventory quantity minus demands of the outlets. This quantity is only reported, if out of inventory quantity really exist, otherwise the segment is not used.
<b>LOC</b> - C 1	- <b>GLN location of delivery or location of receipt</b> This segment is used to provide the GLN of location of delivery or GLN of location of receipt, if applicable.
<b>STS</b> - C 1	- <b>Reason code and description</b> This segment is used to give a reason for the inventory update, if applicable
<b>SG11</b> - C 9999	- <b>INV-QTY</b>
<b>INV</b> - M 1	- <b>Inventory movement direction</b> This segment is used to provide movement information and inventory results.
<b>QTY</b> - M 1	- <b>Goods received quantity</b> Definition Goods received quantity: Goods received by delivery of the supplier, i.e. goods received quantity accounts increasing the inventory.
<b>LOC</b> - C 1	- <b>GLN location of delivery or location of receipt</b> This segment is used to provide the GLN of location of delivery or GLN of location of receipt, if applicable.
<b>STS</b> - C 1	- <b>Reason code and description</b> This segment is used to give a reason for the inventory update, if applicable
<b>SG11</b> - C 9999	- <b>INV-QTY</b>
<b>INV</b> - M 1	- <b>Inventory movement direction</b> This segment is used to provide movement information and inventory results.
<b>QTY</b> - M 1	- <b>Return to manufacturer</b> Return to the manufacturer: A quantity of products sent back from the manufacturer.
<b>LOC</b> - C 1	- <b>GLN location of delivery or location of receipt</b> This segment is used to provide the GLN of location of delivery or GLN of location of receipt, if applicable.
<b>STS</b> - C 1	- <b>Reason code and description</b> This segment is used to give a reason for the inventory update, if applicable
<b>SG11</b> - C 9999	- <b>INV-QTY</b>
<b>INV</b> - M 1	- <b>Inventory movement direction</b> This segment is used to provide movement information and inventory results.
<b>QTY</b> - M 1	- <b>Adjustment of inventory quantity</b> Definition Adjustment of inventory quantity: Adjustment to inventory quantity (by use of the correct sign; "-" is "negative", no sign is positive). Reasons can be damage, inventory differences, adjustments of wrong accountings. Without returns to manufacturer, returns from outlets to store, inventory movement quantities, quantity of reservation, goods receipt.
<b>LOC</b> - C 1	- <b>GLN location of delivery or location of receipt</b> This segment is used to provide the GLN of location of delivery or GLN of location of receipt, if applicable.
<b>STS</b> - C 1	- <b>Reason code and description</b> This segment is used to give a reason for the inventory update, if applicable
<b>SG11</b> - C 9999	- <b>INV-QTY</b>
<b>INV</b> - M 1	- <b>Inventory movement direction</b> This segment is used to provide movement information and inventory results.

<b>QTY</b> - M 1	- <b>Quantity moved between outlets</b> Definition: A quantity of products moved between outlets.
<b>LOC</b> - C 1	- <b>GLN location of delivery or location of receipt</b> This segment is used to provide the GLN of location of delivery or GLN of location of receipt, if applicable.
<b>STS</b> - C 1	- <b>Reason code and description</b> This segment is used to give a reason for the inventory update, if applicable
<b>SG11</b> - C 9999	- <b>INV-QTY</b>
<b>INV</b> - M 1	- <b>Inventory movement direction</b> This segment is used to provide movement information and inventory results.
<b>QTY</b> - M 1	- <b>Returned by consumer quantity</b> Definition: Quantity returned by a consumer.
<b>LOC</b> - C 1	- <b>GLN location of delivery or location of receipt</b> This segment is used to provide the GLN of location of delivery or GLN of location of receipt, if applicable.
<b>STS</b> - C 1	- <b>Reason code and description</b> This segment is used to give a reason for the inventory update, if applicable
<b>SG11</b> - C 9999	- <b>INV-QTY</b>
<b>INV</b> - M 1	- <b>Inventory movement direction</b> This segment is used to provide movement information and inventory results.
<b>QTY</b> - M 1	- <b>Delivered quantity</b> Definition: Definition: Quantity actually delivered to the final destination.
<b>LOC</b> - C 1	- <b>GLN location of delivery or location of receipt</b> This segment is used to provide the GLN of location of delivery or GLN of location of receipt, if applicable.
<b>STS</b> - C 1	- <b>Reason code and description</b> This segment is used to give a reason for the inventory update, if applicable
<b>SG11</b> - C 9999	- <b>INV-QTY</b>
<b>INV</b> - M 1	- <b>Inventory movement direction</b> This segment is used to provide movement information and inventory results.
<b>QTY</b> - M 1	- <b>Statistical sales quantity</b> Definition statistical sales quantity: Quantity of goods sold in a specified period.
<b>LOC</b> - C 1	- <b>GLN location of delivery or location of receipt</b> This segment is used to provide the GLN of location of delivery or GLN of location of receipt, if applicable.
<b>STS</b> - C 1	- <b>Reason code and description</b> This segment is used to give a reason for the inventory update, if applicable
<b>SG11</b> - C 9999	- <b>INV-QTY</b>
<b>INV</b> - M 1	- <b>Inventory movement direction</b> This segment is used to provide movement information and inventory results.
<b>QTY</b> - M 1	- <b>Change in business model</b> Indication of the quantity movement with code value X24, enabling the distinction to periodic inventory reports, only provided in start and end report (DBS, DBE)
<b>LOC</b> - C 1	- <b>GLN location of delivery or location of receipt</b> This segment is used to provide the GLN of location of delivery or GLN of location of receipt, if applicable.

**STS** - C 1

- **Reason code and description**

This segment is used to give a reason for the inventory update, if applicable

**Summary section**

**UNT** - M 1

- **End of message**

This segment is mandatory in UN/EDIFACT. It must always be the last segment in the message.

**UNZ** - M 1

- **End of the transmission file**

The UNZ segment is the last segment of the transmission file.

## 4 Segments layout

### Heading section

Segment number: 1

<b>UNA</b> - C 1 - Service string advice					
Description: To define the characters selected for use as delimiters and indicators in the rest of the interchange that follows.					
Business Term	DE	EDIFACT	EAN	* GER	Description
<b>Component data element separator</b>	UNA1	M an1	<b>M</b>		Default value: ":"
<b>Data element separator</b>	UNA2	M an1	<b>M</b>		Default value: "+"
<b>Decimal notation</b>	UNA3	M an1	<b>M</b>		Default value: "."
<b>Release character</b>	UNA4	M an1	<b>M</b>		Default value: "?"
<b>Reserved for future use</b>	UNA5	M an1	<b>M</b>		(Default value: space )
<b>Segment terminator</b>	UNA6	M an1	<b>M</b>		Default value: " ' "
Segment notes:  Segment status: Depending  The use of the UNA segment is mandatory, if character set "A" (UNB,DE0001) is not used. For international EDI the use of character set UNOA is recommended. For national (German) EDI the use of UNOC is reasonable because it contains lower case letters and umlauts.  Example: UNA:+.? ' The UNA segment contains the default service string characters.					

**Heading section**

Segment number: 2

UNB - M 1 - Interchange header					
Description: To start, identify and specify an interchange.					
Business Term	DE	EDIFACT	EAN	* GER	Description
	S001	M	<b>M</b>		
<b>Character set</b>	0001	M a4	<b>M</b>		UNOA = UN/ECE level A UNOB = UN/ECE level B UNOC = UN/ECE level C UNOD = UN/ECE level D UNOE = UN/ECE level E UNOF = UN/ECE level F
<b>Syntax version</b>	0002	M n1	<b>M</b>		3 = Version 3
	S002	M	<b>M</b>		
<b>Identification of the sender of the transmission file</b>	0004	M an..35	<b>M</b>		= Global Location Number (GLN)
	0007	C an..4	<b>R</b>		14 = GS1
<b>Address for reverse routing</b>	0008	C an..14	<b>O</b>		See note
	S003	M	<b>M</b>		
<b>Identification of the receiver of the transmission file</b>	0010	M an..35	<b>M</b>		= Global Location Number (GLN)
	0007	C an..4	<b>R</b>		14 = GS1
<b>Routing address</b>	0014	C an..14	<b>O</b>		See note
	S004	M	<b>M</b>		
<b>File creation date</b>	0017	M n6	<b>M</b>		= Date format JJMMTT
<b>File creation time</b>	0019	M n4	<b>M</b>		= Time format HHMM
<b>Interchange control reference, beginning</b>	0020	M an..14	<b>M</b>		= Unique senders reference
	S005	C	<b>O</b>		
<b>Password interchange</b>	0022	M an..14	<b>M</b>		
	0025	C an2	<b>O</b>		AA = Reference BB = Password
<b>Application reference</b>	0026	C an..14	<b>O</b>		Message type if the transmission file contains only one message type
	0029	C a1	<b>O</b>		A = Highest priority
<b>Acknowledgement request</b>	0031	C n1	<b>O</b>		
<b>EANCOM</b>	0032	C an..35	<b>O</b>	<b>R</b>	= EANCOM... EDIFACT subset identification (see note)
<b>Test indicator</b>	0035	C n1	<b>O</b>		1 = Interchange is a test
Segment notes:					
Segment status: Mandatory					
This segment is used to envelope the interchange, as well as to identify both, the party to whom the interchange is sent and the party who has sent the interchange. For international EDI the use of character set UNOA is recommended. For national (German) EDI the use of UNOC is reasonable because it contains lower case letters and umlauts.					



## Heading section

Segment number: 2

**Note DE 0008:**

The address for reverse routing is provided by the interchange sender to inform the interchange recipient of the address within the sender's (source) system to which responding interchanges must be sent. It is recommended that the GLN be used for this purpose.

**Note DE 0014:**

The routing address is used to identify the receiver, if a provider adds service values for the actual receiver (e.g. consolidated companies, corporate group). The use of the identification system (e.g. GLN) has to be agreed bilaterally.

**Note DE 0020:**

This data element must contain a consistent sequential number per interchange between sender and receiver of the transmission.

**Note DE 0032:**

This data element is used to identify any underlying agreements which control the exchange of data. Within EANCOM, the identity of such agreements must start with the letters 'EANCOM', the remaining characters within the data element being filled according to bilateral agreements.

Example: UNB+UNOC:3+4012345000009:14:4012345000016+4000004000002:14:4000004000095+151205:1043+4711++++EANCOM+1'

The EANCOM interchange with reference 4711 dated 13.11.2015, 10 h 43 is sent by the issuer identified with GLN 4012345000009 to the receiver identified with GLN 4000004000002.

**Heading section**

Segment number: 3

<b>UNH</b> - M 1 - Message header						
Description: To head, identify and specify a message.						
Business Term	DE	EDIFACT	EAN	*	GER	Description
<b>Message reference number</b>	0062	Man..14	<b>M</b>			Sender's unique message reference. Sequence number of messages in the interchange. DE 0062 in UNT will have the same value. Generated by the sender.
	S009	M	<b>M</b>			
	0065	Man..6	<b>M</b>	*		INVRPT = <b>Inventory report message</b>
	0052	Man..3	<b>M</b>	*		D = <b>Draft version/UN/EDIFACT Directory</b>
	0054	Man..3	<b>M</b>	*		01B = <b>Release 2001 - B</b>
	0051	Man..2	<b>M</b>	*		UN = <b>UN/CEFACT</b>
	0057	C an..6	<b>R</b>	*		EAN007 = <b>GS1 version control number (GS1 Code)</b>
Segment notes:						
Segment status: Mandatory						
This segment is used to head, identify and specify a message.						
Example: UNH+ME000001+INVRPT:D:01B:UN:EAN007' The reference number of the INVRPT message is ME000001.						

**Heading section**

Segment number: 4

<b>BGM</b> - M 1 - Beginning of message						
Description: To indicate the type and function of a message and to transmit the identifying number.						
Business Term	DE	EDIFACT	EAN	*	GER	Description
	C002	C	R			
<b>Inventory type code</b>	1001	C an..3	R	*		35 = <b>Inventory report</b> 78 = <b>Inventory movement advice</b>
	1131	C an..17	N			
	3055	C an..3	N			
<b>Process variant, coded</b>	1000	C an..35	O			This data element indicates the variant of the process model textile: "Business Model" on the website of GS1 Netherlands.
	C106	C	R			
<b>Document Number</b>	1004	C an..35	R			Document number assigned by sender
	1225	C an..3	R	*		9 = <b>Original</b>
Segment notes:						
Segment status: Mandatory						
This segment is used to indicate the type and function of a message and to transmit the identifying number.						
Example: BGM+35:::FM100+87441+9' The document number of the inventory report is 87441.						

**Heading section**

Segment number: 5

<b>DTM</b> - M 10 - Date/time/period						
Description: To specify date, and/or time, or period.						
Business Term	DE	EDIFACT	EAN	*	GER	Description
	C507	M	<b>M</b>			
	2005	Man..3	<b>M</b>	*		137 = Document/message date/time
<b>Creation date</b>	2380	C an..35	<b>R</b>			
	2379	C an..3	<b>R</b>			102 = CCYYMMDD 203 = CCYYMMDDHHMM
Segment notes:						
Segment status: Mandatory						
Identification of the 'Document/message date/time' (code value 137) is mandatory in the inventory report message.						
Example: DTM+137:20151105:102' The message was created on 05.11.2015.						

**Heading section**

Segment number: 6

<b>DTM</b> - M 10 - Date/time/period						
Description: To specify date, and/or time, or period.						
Business Term	DE	EDIFACT	EAN	*	GER	Description
	C507	M	<b>M</b>			
	2005	Man..3	<b>M</b>	*		366 = <b>Inventory report date</b>
<b>Date of inventory report</b>	2380	C an..35	<b>R</b>			
	2379	C an..3	<b>R</b>			102 = <b>CCYYMMDD</b> 203 = <b>CCYYMMDDHHMM</b>
Segment notes:						
Segment status: Depending						
This DTM segment is used, if the date of the inventory report differs from the message date.						
Example: DTM+366:20151104:102' The inventory report was created on 04.11.2015.						

**Heading section**

Segment number: 7

<b>DTM</b> - M 10 - Date/time/period						
Description: To specify date, and/or time, or period.						
Business Term	DE	EDIFACT	EAN	*	GER	Description
	C507	M	<b>M</b>			
	2005	Man..3	<b>M</b>	*		194 = Start date/time
<b>Reporting period, start</b>	2380	C an..35	<b>R</b>			
	2379	C an..3	<b>R</b>			102 = CCYYMMDD 203 = CCYYMMDDHHMM 615 = YYWW
Segment notes:  Segment status: Depending  This DTM segment is used, if the date of the inventory report differs from the message date.  Example: DTM+194:20151104:102' 04.11.2015 is the start date of the reporting period.						

**Heading section**

Segment number: 8

<b>DTM</b> - M 10 - Date/time/period						
Description: To specify date, and/or time, or period.						
Business Term	DE	EDIFACT	EAN	*	GER	Description
	C507	M	<b>M</b>			
	2005	Man..3	<b>M</b>	*		206 = End date/time
<b>Reporting period, end</b>	2380	C an..35	<b>R</b>			
	2379	C an..3	<b>R</b>			102 = CCYYMMDD 203 = CCYYMMDDHHMM 615 = YYWW
Segment notes:  Segment status: Depending  This DTM segment is used, if the date of the inventory report differs from the message date.  Example: DTM+206:20151104:102' 04.11.2015 is the end date of the reporting period.						

**Heading section**

Segment number: 9

<b>SG1</b>	- C	10 - RFF				
<b>RFF</b>	- M	1 - Reference				
Description: To specify a reference.						
<b>Business Term</b>	<b>DE</b>	<b>EDIFACT</b>	<b>EAN</b>	<b>*</b>	<b>GER</b>	<b>Description</b>
	C506	M	<b>M</b>			
	1153	M an..3	<b>M</b>			IV = Invoice number
<b>Number of invoice</b>	1154	C an..70	<b>R</b>			
<p>Segment notes:</p> <p>Segment status: Conditional</p> <p>This segment is used to identify an invoice relevant to the whole inventory report. This Segment is used only if the invoice is sent as a credit advice.</p> <p>Example: RFF+IV:May15' The inventory report relates to invoice May15.</p>						



**Heading section**

Segment number: 10

<b>SG2</b>	- C	20 - NAD-SG3				
<b>NAD</b>	- M	1 - Name and address				
Description: To specify the name/address and their related function by C082 only.						
Business Term	DE	EDIFACT	EAN	*	GER	Description
	3035	M an..3	<b>M</b>			SU = <b>Supplier</b>
	C082	C	<b>A</b>		<b>R</b>	
<b>Supplier/message receiver identification</b>	3039	M an..35	<b>M</b>			Global Location Number (GLN) - Format n13
	1131	C an..17	<b>N</b>			
	3055	C an..3	<b>R</b>	*		9 = <b>GS1</b>
Segment notes: Segment status: Mandatory The supplier/message receiver is identified by GLN. Example: NAD+SU+4089876511113::9' The supplier is identified by GLN 4089876511113.						

**Heading section**

Segment number: 11

<b>SG2</b>	- C	20 - NAD-SG3-SG4				
<b>NAD</b>	- M	1 - Name and address				
Description:						
To specify the name/address and their related function, either by C082 only and/or unstructured by C058.						
Business Term	DE	EDIFACT	EAN	*	GER	Description
	3035	M an..3	<b>M</b>			GY = <b>Inventory reporting party</b>
	C082	C	<b>A</b>		<b>R</b>	
<b>Inventory reporting party 1</b>	3039	M an..35	<b>M</b>			Global Location Number (GLN)- Format n13
	1131	C an..17	<b>N</b>			
	3055	C an..3	<b>R</b>	*		9 = <b>GS1</b>
	C058	C	<b>O</b>			This composite may only be used to fulfil the requirements of directive 2003/58/EG, article 4. If applicable the message sender gets the possibility to give the relevant statements at this place.
	3124	M an..35	<b>M</b>			
	3124	C an..35	<b>O</b>			
	3124	C an..35	<b>O</b>			
	3124	C an..35	<b>O</b>			
	3124	C an..35	<b>O</b>			
Segment notes:						
Segment status: Mandatory						
The inventory reporting party is identified by GLN. At least one of the three inventory reporting parties must be indicated.						
Example: NAD+GY+4012345123456::9+X:X:X:X:X' The inventory reporting party is identified by GLN 4012345123456.						

**Heading section**

Segment number: 12

<b>SG2</b>	- C	20 - NAD-SG3-SG4				
<b>SG4</b>	- C	10 - CTA				
<b>CTA</b>	- M	1 - Contact information				
Description: To identify a person or a department to whom communication should be directed.						
Business Term	DE	EDIFACT	EAN	*	GER	Description
	3139	C an..3	<b>M</b>			CN = <b>Consignee</b>
	C056	C	<b>C</b>		<b>R</b>	
<b>Subdivision</b>	3413	C an..17	<b>M</b>			
Segment notes:  Segment status: Conditional  This segment is used to identify a subdivision.  Example: CTA+CN+Men Department' Subdivision: Men Department						

**Detail section**

Segment number: 13

<b>SG9</b>	- M	9999999	- LIN-PIA-IMD-SG11	
<b>LIN</b>	- M	1	- Line item	
Description: To identify a line item and configuration.				
Business Term	DE	EDIFACT	EAN * GER	Description
<b>Line item number</b>	1082	C an..6	<b>R</b>	Application generated number of the item lines within the message
	1229	C an..3	<b>N</b>	
	C212	C	<b>D</b>	
<b>GTIN Article identification</b>	7140	C an..35	<b>R</b>	GTIN, Format n..14
	7143	C an..3	<b>R</b> *	SRV = <b>GS1 Global Trade Item Number</b>
Segment notes:  Segment status: Mandatory  In this segment the GTIN is indicated as item identification.  Example: LIN+1++4056786542384:SRV' The product for inventories that are being reported, is identified by GTIN 4056786542384.				

**Detail section**

Segment number: 14

<b>SG9</b>	- M	9999999	- LIN-PIA-IMD-SG11
<b>PIA</b>	- C	10	- Additional product id
Description: To specify additional item identification codes.			
Business Term	DE	EDIFACT	EAN * GER Description
	4347	M an..3	<b>M</b> * 1 = Additional identification
	C212	M	<b>M</b>
<b>Buyers's item number</b>	7140	C an..35	<b>R</b>
	7143	C an..3	<b>R</b> IN = Buyer's item number
Segment notes: Segment status: Conditional This segment is used to advise the buyer's article number additionally to GTIN. Example: PIA+1+7788:IN'			

**Detail section**

Segment number: 15

**SG9** - M 9999999 - LIN-PIA-IMD-SG11

**IMD** - C 10 - Item description

Description:

To describe an item in either an industry or free format.

Business Term	DE	EDIFACT	EAN	*	GER	Description
	7077	C an..3	O	*	R	F = Free-form
	C272	C	O		N	
	7081	C an..3	R			
	1131	C an..17	O			
	3055	C an..3	D	*		
	C273	C	R			
	7009	C an..17	O		D	CU = Consumer unit
	1131	C an..17	O			
	3055	C an..3	D			92 = Assigned by buyer or buyer's agent
<b>Buyer's item description</b>	7008	C an..256	O		R	
	7008	C an..256	O		O	
	3453	C an..3	O		R	ISO 639 2-Alpha Code, e.g. NL = Dutch EN = English

Segment notes:

Segment status: Conditional

This segment is used to the buyer's item description.

Example: IMD+F++CU::92:BUYERS DESCRIPTION OF ARTICLE::EN'

**Detail section**

Segment number: 16

<b>SG9</b>	- M	9999999	- LIN-PIA-IMD-SG11
<b>SG11</b>	- C	9999	- INV-QTY-LOC-STS
<b>INV</b>	- M	1	- Inventory management related details
<p>Description:</p> <p>To provide the different information related to the inventory management functions and needed to process properly the inventory movements and the inventory balances.</p>			
Business Term	DE	EDIFACT	EAN * GER Description
<b>Inventory movement direction</b>	4501	C an..3	<b>D</b> 1 = Movement out of inventory 2 = Movement into inventory
	7491	C an..3	<b>O</b>
	4499	C an..3	<b>N</b>
<b>Consignment inventory, method</b>	4503	C an..3	<b>D</b> 1 = Book-keeping inventory balance 2 = Formal inventory balance
<p>Segment notes:</p> <p>Segment group status: Mandatory, see note in the QTY segment</p> <p>Segment status: Mandatory</p> <p>This segment is used to provide movement information and inventory results. At least one data element must be filled out.</p> <p>Example: INV++++1' A book-keeping inventory balance is reported.</p>			

**Detail section**

Segment number: 17

<b>SG9</b>	- M	9999999	- LIN-PIA-IMD-SG11	
<b>SG11</b>	- C	9999	- INV-QTY-LOC-STS	
<b>QTY</b>	- M	1	- Quantity	
Description: To specify a pertinent quantity.				
Business Term	DE	EDIFACT	EAN * GER	Description
	C186	M	<b>M</b>	
<b>Transaction type</b>	6063	M an..3	<b>M</b>	<ul style="list-style-type: none"> <li>145 = Actual stock</li> <li>152 = Consignment stock</li> <li>199 = Inventory withdrawal quantity</li> <li>73 = Outstanding quantity</li> <li>217 = Out of inventory quantity</li> <li>48 = Received quantity</li> <li>445 = Return to the manufacturer</li> <li>191 = Adjustment to inventory quantity</li> <li>98E = Quantity moved between outlets (GS1 Code)</li> <li>210 = Returned by consumer quantity</li> <li>46 = Delivered quantity</li> <li>153 = Statistical sales quantity</li> <li>X24 = Consignment stock, available at due date (GS1 Code)</li> </ul>
<ul style="list-style-type: none"> <li>- <b>Current inventory</b></li> <li>- <b>Consignment stock</b></li> <li>- <b>Inventory withdrawal quantity</b></li> <li>- <b>Outstanding quantity</b></li> <li>- <b>Out of inventory quantity</b></li> <li>- <b>Goods received quantity</b></li> <li>- <b>Return to manufacturer</b></li> <li>- <b>Adjustment of inventory quantity</b></li> <li>- <b>Quantity moved between outlets</b></li> <li>- <b>Quantity returned by consumer</b></li> <li>- <b>Delivered quantity</b></li> <li>- <b>Sales quantity</b></li> <li>- <b>Change in business model</b></li> </ul>	6060	M an..35	<b>M</b>	Use only numeric values.
	6411	C an..3	<b>D</b>	<ul style="list-style-type: none"> <li>LTR = litre</li> <li>KGM = kilogram</li> </ul> <p>The use of any relevant code value of this codes list is allowed. This DE is only used if the current line item is a variable quantity product.</p>



Segment notes:

Segment status: Mandatory

DE 6411 is only used, if the article is a variable quantity article. Default value is piece.

Examples:

QTY+145:12:KGM'	The current inventory is 12 kg.
QTY+152:12'	The current consignment quantity is 12
QTY+199:9:KGM'	The inventory withdrawal is 9 kg
QTY+73:20:KGM'	The outstanding quantity is 20 kg
QTY+217:8:KGM'	The out of inventory quantity is 8 kg
QTY+48:8:KGM'	The goods received quantity is 8 kg
QTY+445:8'	The return to manufacturer quantity is 8
QTY+191:8'	The adjustment of inventory quantity is 8
QTY+98E:8:KGM'	Quantity of products moved between outlets is 8 kg
QTY+210:8:KGM'	Quantity returned by a consumer is 8 kg
QTY+46:8'	The delivered quantity is 8
QTY+153:8:KGM'	The sales quantity is 8
QTY+X24:8:KGM'	The consignment stock is 8

**Detail section**

Segment number: 18

<b>SG9</b>	- M	9999999	- LIN-PIA-ALI-SG11
<b>SG11</b>	- C	9999	- INV-QTY-LOC-STS
<b>LOC</b>	- C	1	- Place/location identification

Description:

To identify a place or a location and/or related locations.

Business Term	DE	EDIFACT	EAN	*	GER	Description
	3227	M an..3	<b>M</b>			83 = Place of delivery 88 = Place of receipt
	C517	C	<b>A</b>		<b>R</b>	
<b>GLN place of delivery</b> <b>GLN place of receipt</b>	3225	C an..25	<b>A</b>		<b>R</b>	Global Location Number (GLN)- Format n13
	1131	C an..17	<b>O</b>			
	3055	C an..3	<b>D</b>		<b>R</b>	9 = <b>GS1</b>

Segment notes:

Segment status: Mandatory

Example: LOC+83+5099104000226::9'  
The place of delivery is identified by GLN 5099104000226.

**Detail section**

Segment number: 19

<b>SG9</b>	- M	9999999	- LIN-PIA-ALI-SG11
<b>SG11</b>	- C	9999	- INV-QTY-LOC- STS
<b>STS</b>	- C	9	- Status

Description:

A segment giving transport status report, e.g. damaged, customs refusal and totally missing

Business Term	DE	EDIFACT	EAN	*	GER	Description
	C601	C	O		N	
	9015	M an..3	M			
	1131	C an..17	N			
	3055	C an..3	D			
	C555	C	O		N	
	4405	M an..3	M			
	1131	C an..17	N			
	3055	C an..3	D			
	4404	C an..35	N			
	C556	C	O		R	
<b>Reason code</b>	9013	M an..3	M			14 = Damaged 18 = Discrepancy 66 = Stolen 67 = Administrative error 76 = Destroyed 108 = Goods not barcoded
	1131	C an..17	N			
	3055	C an..3	D		N	
<b>Reason description</b>	9012	C an..265	O			

Segment notes:

Segment status: Optional

Example: STS+++14:::Rits stuk'

**Summary section**

Segment number: 20

<b>UNT</b> - M 1 - Message trailer						
Description: To end and check the completeness of a message.						
<b>Business Term</b>	<b>DE</b>	<b>EDIFACT</b>	<b>EAN</b>	<b>*</b>	<b>GER</b>	<b>Description</b>
<b>Number of segments in the message</b>	0074	M n..6	<b>M</b>			
	0062	M an..14	<b>M</b>			Same content as DE 0062 in UNH segment
Segment notes:  Segment status: Mandatory  This segment is mandatory in UN/EDIFACT. It must always be the last segment in the message.  Example: UNT+74+ME000001' Number of segments in the message.						

**Summary section**

Segment number: 21

**UNZ** - M 1 - Interchange trailer

Description:  
To end and check the completeness of an interchange.

Business Term	DE	EDIFACT	EAN	*	GER	Description
<b>End of the transmission file, Number of messages</b>	0036	M n..6	<b>M</b>			Number of messages or message groups in the transmission file.
<b>Interchange control reference, end</b>	0020	M an..14	<b>M</b>			Interchange control reference, identical with UNB DE 0020.

Segment notes:

Segment status: Mandatory

The UNZ segment is the last segment of the transmission file.

Note DE 0036:  
If functional groups are not used, this is the number of messages within the interchange.

Example: UNZ+1+4711'  
The transmission file contains 1 message.

## 5 INVRPT message example

Please note that EANCOM<sup>®</sup> 2002 message examples are intended to describe all possible constellations of segment use. They do not necessarily reflect the actual requirements of a business process.

Please also note that for technical reasons the examples can contain component data element separators, which would normally be represented as data element separators in original messages:

```
UNA:+.? '  
UNB+UNOC:3+4012345000009:14+4000004000002:14+151205:1043+4711+++++EANCOM+1'  
UNH+ME000001+INVRPT:D:01B:UN:EAN007'  
BGM+35:::FM100+87441+9'  
DTM+137:20151205:102'  
DTM+366:20151204:102'  
NAD+SU+4089876511113:::9'  
NAD+GY+4012345123456:::9'  
CTA+CN+Men Department'  
LIN+1+++4056786542384:SRV'  
PIA+1+7788:IN'  
IMD+F++CU:::92:BUYERS DESCRIPTION OF ARTICLE:::EN'  
INV++++1'  
QTY+145:12:KGM'  
INV++++1'  
QTY+152:12'  
INV+1+++1'  
QTY+199:9:KGM'  
INV+2+++1'  
QTY+48:8:KGM'  
INV+1+++1'  
QTY+445:8'  
LOC+83+5099104000226:::9'  
STS+++14:::Rits stuk'  
INV++++1'  
QTY+191:8'  
INV++++1'  
QTY+98E:8:KGM'  
INV+2+++1'  
QTY+210:8:KGM'  
INV+2+++1'  
QTY+46:8'  
INV++++1'  
QTY+153:8:KGM'  
UNT+33+ME000001'  
UNZ+1+4711'
```