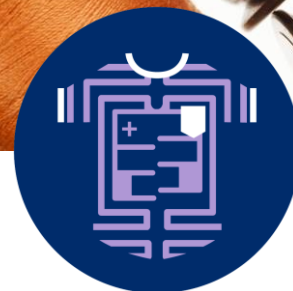




# GS1 EDI

Sales Data Report (SLSRPT) for the fashion sector

*Release 3.0, Ratified, 28 October 2016*



## Document Summary

Document Item	Current Value
Document Name	GS1 EDI
Document Date	28 October 2016
Document Version	3.0
Document Status	Ratified
Document Description	Sales Data Report (SLSRPT) for the fashion sector

## Log of Changes

Release	Date of Change	Changed By	Summary of Change
2.1	19 October 2012	GS1 Germany	First version.
3.0	28 October 2016	Jan Westerkamp Reinier Prenger Sebas van Zundert	<ul style="list-style-type: none"> <li>- Added Buyer's item number</li> <li>- Added GFK-code</li> <li>- Added Supplier's item number</li> <li>- Added Buyer's item description</li> <li>- Added Colour description</li> <li>- Added Size description</li> <li>- Added Cash register number</li> <li>- Added Employee number</li> <li>- Added Identification of stock location</li> <li>- Added Customer's order number</li> <li>- Added Return reason</li> <li>- Added Allowance amount</li> <li>- Added Gross selling article price exclusive VAT and discounts</li> <li>- Added Gross selling article price inclusive VAT and discounts</li> <li>- Added Net selling article price inclusive VAT</li> <li>- Added Net selling article price exclusive VAT</li> <li>- Deleted Statements on business letters</li> </ul>

---

# Table of contents

<b>Introduction</b> .....	<b>4</b>
<b>1 Business terms</b> .....	<b>7</b>
<b>2 Message structure chart</b> .....	<b>10</b>
<b>3 Segments description</b> .....	<b>11</b>
<b>4 Segments layout</b> .....	<b>14</b>
<b>5 SLSRPT message example</b> .....	<b>54</b>

## Introduction

### Preamble

The aim of the brochure on hand is to offer documentation describing the exchange of sales data between business partners.

This document is based on the CFB-Connecting Fashion Business messages of GS1 Germany. In consultation with the Dutch fashion industry additional requirements have been added. The basis of this elaboration is the international standard EANCOM® 2002. The message type SLSRPT 007 is used to transmit relevant data. GEFEG.FX (Gefeg mbH, Berlin) was used as the documentation tool.

Please be aware that this document does not replace the complete specification in the original chapters or other relevant instructions within the EANCOM® 2002 documentation. Instead, it deals with the description of segments, data elements and codes to be used for a specific task.

### Conventions

This brochure offers different ways to start:

**Section 1, 'Business Terms'**, is a table which links directly to the sequence numbers of the segments.

**Section 2, 'Message Structure Chart'**, is a list of all used segments in the same sequence as they are defined in the EANCOM® message. In general, for each piece of information one single segment is provided. Exceptions may arise when the occurrence of a segment is limited and can contain alternative information (e.g., segment BGM).

**Section 3, 'Segments Description'**, is a brief summary of the use of each segment.

In **Section 4, 'Segments Layout'**, an illustration that has been chosen to match the business terms (data from the in-house application) with the elements from the EANCOM® syntax.

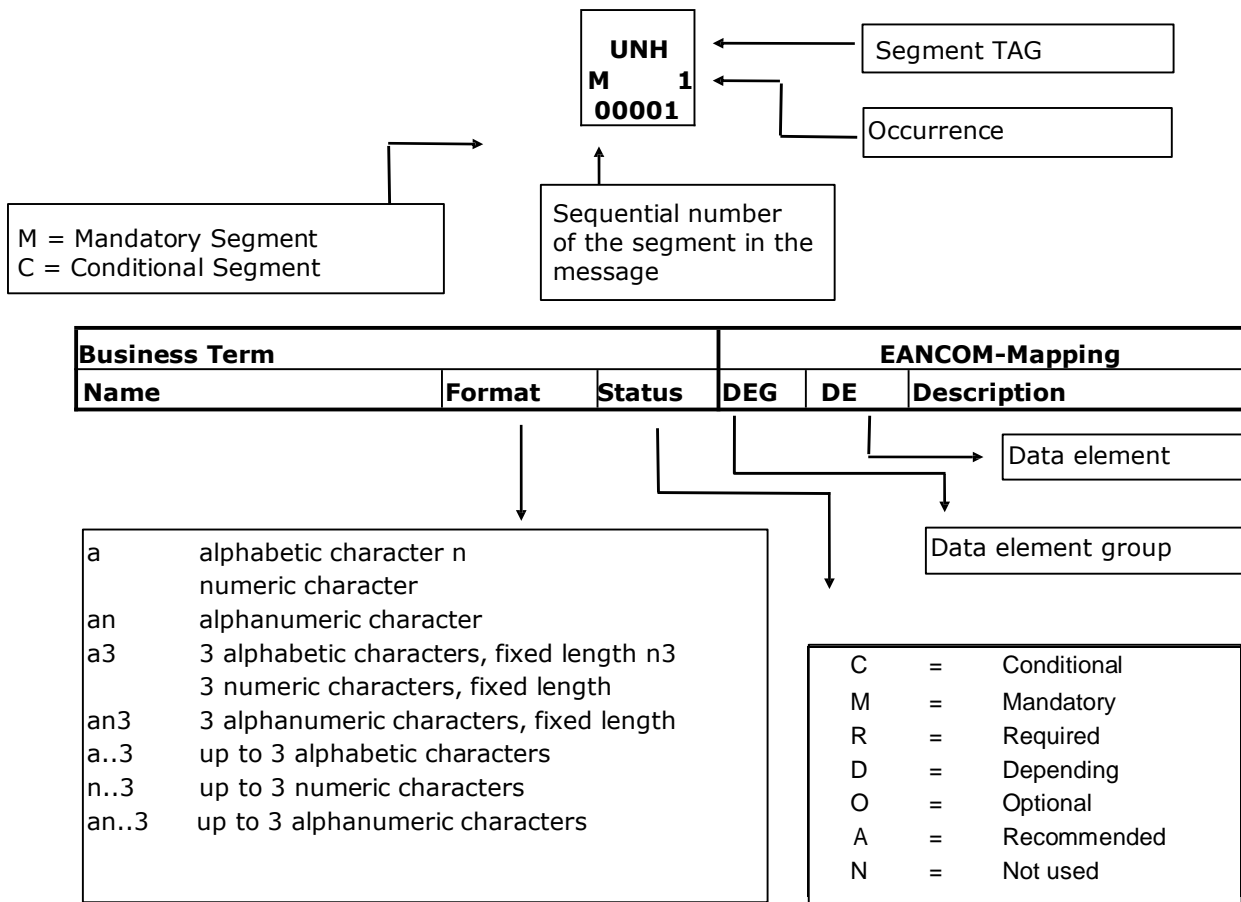
#### *Note on section 4:*

An additional column (GER) to provide a German status has been added to the layouts. An entry indicates that the recommended status differs from the EANCOM® status. If the recommended status is weaker than the EANCOM® status, the data element (or, if only one term exists the entire segment) can be omitted.

In general, code names are presented in red; these must to be understood as restricted and should not be changed/modified without bilateral agreement with the partner. If codes are given as examples, they are represented in blue (e.g., measurements). In this case, all codes of the relevant code list can be used.

**Section 5, 'Example(s)'**, provides at least one message example. Please note that, for technical reasons, the examples can contain component data element separators, which would otherwise be represented as data element separators in the original messages.

The following conventions apply to this document:



## Message structure

### Heading section

Specification of message sender and receiver as well as reporting period.

### Detail section

Specification of locations (GLN) and GTIN to identify goods. Specification of quantities is mandatory, amounts conditional.

### Summary section

The summary section contains no data and has syntactical reasons.

## 1 Business terms

Term	EANCOM-Segment			Data element	
	No.	Segment	SG	DEG	DE
Acknowledgement request	2	UNB			0031
Address for reverse routing	2	UNB		S002	0008
Allowance amount	29	MOA	SG6\SG8	C516	5004
Application reference	2	UNB			0026
Buyer's item description	20	IMD	SG6\SG8	C273	7008
Buyer's item number	17	PIA	SG6\SG8	C212	7140
Cash register number	23	RFF	SG6\SG8	C506	1154
Character set	2	UNB		S001	0001
Colour description	21	IMD	SG6\SG8	C273	7008
Component data element separator	1	UNA			UNA1
Contact person at corporate office	11	CTA	SG2\SG3	C056	3412
Creation date	5	DTM		C507	2380
Currency	13	CUX	SG5	C504	6345
Customer's order number	26	RFF	SG6\SG8	C506	1154
Data element separator	1	UNA			UNA2
Decimal notation	1	UNA			UNA3
Document Number	4	BGM		C106	1004
EANCOM	2	UNB			0032
Employee number	24	RFF	SG6\SG8	C506	1154
End of the transmission file, Number of messages or message groups	39	UNZ			0036
File creation date	2	UNB		S004	0017
File creation time	2	UNB		S004	0019
GFK code	18	PIA	SG6\SG8	C212	7140
Gross selling article price exclusive VAT and discounts	31	PRI	SG6\SG8\SG9	C509	5118
Gross selling article price inclusive VAT and discounts	32	PRI	SG6\SG8\SG9	C509	5118
GTIN Article identification	16	LIN	SG6\SG8	C212	7140
Identification of buyer/message sender	10	NAD	SG2	C082	3039
Identification of location of sale	14	LOC	SG6	C517	3225
Identification of stock location	25	RFF	SG6\SG8	C506	1154

Term	EANCOM-Segment			Data element	
	No.	Segment	SG	DEG	DE
Identification of the receiver of the transmission file	2	UNB		S003	0010
Identification of the sender of the transmission file	2	UNB		S002	0004
Interchange control reference, beginning	2	UNB			0020
Interchange control reference, end	39	UNZ			0020
Internal customer number of corporate office	12	RFF	SG2\SG4	C506	1154
Line amount	28	MOA	SG6\SG8	C516	5004
Line item number	16	LIN	SG6\SG8		1082
Message reference number	3	UNH			0062
Net selling article price inclusive VAT	33	PRI	SG6\SG8\SG9	C509	5118
Net selling article price exclusive VAT	34	PRI	SG6\SG8\SG9	C509	5118
Number of segments within the message	38	UNT			0074
Password interchange	2	UNB		S005	0022
Process variant, coded	4	BGM		C002	1000
Quantity returned by consumer	36	QTY	SG6\SG8\SG10	C186	6060
Rate of exchange	13	CUX	SG5		5402
Receipt number	27	RFF	SG6\SG8	C506	1154
Release character	1	UNA			UNA4
Reporting period	8	DTM		C507	2380
Reporting period, end	7	DTM		C507	2380
Reporting period, start	6	DTM		C507	2380
Reserved for future use	1	UNA			UNA5
Retail price	30	PRI	SG6\SG8\SG9	C509	5118
Return reason	27	RFF	SG6\SG8	C506	1154
Routing address	2	UNB		S003	0014
Sales period outlet	15	DTM	SG6	C507	2380
Segment terminator	1	UNA			UNA6
Size description	22	IMD	SG6\SG8	C273	7008
Sold quantity	35	QTY	SG6\SG8\SG10	C186	6060
Supplier's item number	19	PIA	SG6\SG8	C212	7140



Term	EANCOM-Segment			Data element	
	No.	Segment	SG	DEG	DE
Supplier/message receiver identification	9	NAD	SG2	C082	3039
Syntax version	2	UNB		S001	0002
Test indicator	2	UNB			0035

## 2 Message structure chart

UNA	1	C	1	- Used character set
UNB	2	M	1	- Beginning of transmission file

### Heading section

UNH	3	M	1	- Beginning of message
BGM	4	M	1	- Document number
DTM	5	M	5	- Creation date
DTM	6	M	5	- Reporting period, start
DTM	7	M	5	- Reporting period, end
DTM	8	M	5	- Reporting period, textile
SG2		M	5	- NAD
□ NAD	9	M	1	- Identification of supplier/receiver
SG2		M	5	- NAD-SG4
□ NAD	10	M	1	- Identification of buyer/sender
SG3		C	9	- RFF
□ CTA	11	M	1	- Contact person at corporate office
SG4		C	9	- RFF
RFF	12	M	1	- Internal customer number of corporate office
SG5		C	5	- CUX
□ CUX	13	M	1	- Currency

### Detail section

SG6		C	200000	- LOC-DTM-SG8
LOC	14	M	1	- Identification of location of sale
DTM	15	C	5	- Sales period outlet
SG8		C	200000	- LIN-MOA-SG9-SG10-SG10
LIN	16	M	1	- GTIN- Article identification
PIA	17	C	1	- Buyer's item number
PIA	18	C	1	- GFK code
PIA	19	C	1	- Supplier's item number
IMD	20	C	1	- Buyer's item description
IMD	21	C	1	- Colour description
IMD	22	C	1	- Size description
□ RFF	23	C	1	- Cash register number
RFF	24	C	1	- Employee number
RFF	25	C	1	- Identification of stock location
RFF	26	C	1	- Customer's order number
RFF	27	C	1	- Return reason
MOA	28	C	5	- Monetary amount line level, textile
MOA	29	C	5	- Allowance amount
SG9		C	999	- PRI
□ PRI	30	M	1	- Retail price
SG9		C	999	- PRI
□ PRI	31	M	1	- Gross selling article price exclusive VAT and discounts
SG9		C	999	- PRI
□ PRI	32	M	1	- Gross selling article price inclusive VAT and discounts
SG9		C	999	- PRI
□ PRI	33	M	1	- Net selling article price inclusive VAT
SG9		C	999	- PRI
□ PRI	34	M	1	- Net selling article price exclusive VAT
SG10		C	999	- QTY
□ QTY	35	M	1	- Sold quantity
SG10		C	999	- QTY
QTY	36	M	1	- Returned by consumer

### Summary section

UNS	37	M	1	- Section control
UNT	38	M	1	- End of message
UNZ	39	M	1	- End of the transmission file

### 3 Segments description

- UNA - C 1** - **Used character set**  
The use of the UNA segment is mandatory, if character set "A" (UNB,DE0001) is not used.
- UNB - M 1** - **Beginning of transmission file**  
This segment is used to envelope the interchange, as well as to identify both, the party to whom the interchange is sent and the party who has sent the interchange.

#### Heading section

- UNH - M 1** - **Beginning of message**  
This segment is used to head, identify and specify a message.
- BGM - M 1** - **Document number**  
This segment is used to indicate the type and function of a message and to transmit the identifying number.
- DTM - M 5** - **Creation date**  
Identification of the 'Document/message date/time' (code value 137) is mandatory in the invoice message.
- DTM - M 5** - **Reporting period, start**  
DTM segment is used to specify date, and/or time, or period.
- DTM - M 5** - **Reporting period, end**  
DTM segment is used to specify date, and/or time, or period.
- DTM - M 5** - **Reporting period, textile**  
DTM segment is used to specify date, and/or time, or period.  
This segment can be used alternatively (!) to the 2 previous segments.
- SG2 - M 5** - **NAD**
- NAD - M 1** - **Identification of supplier/receiver**  
The supplier/message receiver is identified by GLN.
- SG2 - M 5** - **NAD-SG4**
- NAD - M 1** - **Identification of buyer/sender**  
The buyer/message sender is identified by GLN.
- SG3 - C 9** - **CTA**
- CTA - M 1** - **Contact person at corporate office**
- SG4 - C 9** - **RFF**
- RFF - M 1** - **Internal customer number of corporate office**
- SG5 - C 5** - **CUX**
- CUX - M 1** - **Currency**  
When specifying Reference and Target Currencies for international trade, one occurrence of CUX is all that is required. The reference currency is identified in the first occurrence of composite C504, with the target currency specified in the second occurrence of C504. The rate of exchange between the two is detailed in DE 5402.

#### Detail section

- SG6 - C 200000** - **LOC-DTM-SG8**
- LOC - M 1** - **Identification of location of sale**  
The LOC segment triggers the detail section of the message. Segment group 6 is repeated for every location where sales are reported.  
The outlet for which sales data are reported is identified by GLN.

<b>DTM</b> - C 5	- <b>Sales period outlet</b> The segment is used to provide a date or period when goods have been sold, which are identified in the following LIN group (segment group 8). The DTM segment can be used to specify the weekly sales in a monthly report. This segment is not necessary if the date or period is identical with the specification at header level.
<b>SG8</b> - C 200000	- <b>LIN-MOA-SG9-SG10-SG10</b>
<b>LIN</b> - M 1	- <b>GTIN- Article identification</b> In this segment the GTIN is indicated as item identification.
<b>PIA</b> - C 1	- <b>Buyer's item number</b>
<b>PIA</b> - C 1	- <b>GFK code</b>
<b>PIA</b> - C 1	- <b>Supplier's item number</b>
<b>IMD</b> - C 1	- <b>Buyer's item description</b>
<b>IMD</b> - C 1	- <b>Colour description</b>
<b>IMD</b> - C 1	- <b>Size description</b>
<b>RFF</b> - C 1	- <b>Cash register number</b>
<b>RFF</b> - C 1	- <b>Employee number</b>
<b>RFF</b> - C 1	- <b>Identification of stock location</b>
<b>RFF</b> - C 1	- <b>Customer's order number</b>
<b>RFF</b> - C 1	- <b>Return reason</b>
<b>MOA</b> - C 5	- <b>Monetary amount line level, textile</b> To indicate the retail value of the current article within the specified period code value 402 is used for DE 5025 and AAE is used for DE 5125 of the following PRI segment.
<b>MOA</b> - C 5	- <b>Allowance amount</b> To indicate the allowance for the current article.
<b>SG9</b> - C 999	- <b>PRI</b>
<b>PRI</b> - M 1	- <b>Retail price</b> This segment is used to provide the price by which the current article was sold.
<b>SG9</b> - C 999	- <b>PRI</b>
<b>PRI</b> - M 1	- <b>Gross selling article price exclusive VAT and discounts</b> This segment is used to provide the gross selling article price exclusive VAT and discounts by which the current article was sold.
<b>SG9</b> - C 999	- <b>PRI</b>
<b>PRI</b> - M 1	- <b>Gross selling article price inclusive VAT and discounts</b> This segment is used to provide the gross selling article price inclusive VAT and discounts by which the current article was sold.
<b>SG9</b> - C 999	- <b>PRI</b>
<b>PRI</b> - M 1	- <b>Net selling article price inclusive VAT</b> This segment is used to provide the net selling article price inclusive VAT by which the current article was sold.
<b>SG9</b> - C 999	- <b>PRI</b>
<b>PRI</b> - M 1	- <b>Net selling article price exclusive VAT</b> This segment is used to provide the net selling article price exclusive VAT by which the current article was sold.
<b>SG10</b> - C 999	- <b>QTY</b>
<b>QTY</b> - M 1	- <b>Sold quantity</b> The QTY segment is used to specify the sold quantity for the current item, which was identified in the LIN segment.

**SG10** - C 999

- **QTY**

**QTY** - M 1

- **Returned by consumer**

The QTY segment is used to specify the quantity by the consumer for the current item, which was identified in the LIN segment.

**Summary section**

**UNS** - M 1

- **Section control**

This segment is used to identify the break between the message detail and message trailer sections.

**UNT** - M 1

- **End of message**

This segment is mandatory in UN/EDIFACT. It must always be the last segment in the message.

**UNZ** - M 1

- **End of the transmission file**

The UNZ segment is the last segment of the transmission file.

## 4 Segments layout

### Heading section

Segment number: 1

<b>UNA</b> - C 1 - Service string advice					
Description: To define the characters selected for use as delimiters and indicators in the rest of the interchange that follows.					
Business Term	DE	EDIFACT	EAN	* GER	Description
<b>Component data element separator</b>	UNA1	M an1	<b>M</b>		Default value: ":"
<b>Data element separator</b>	UNA2	M an1	<b>M</b>		Default value: "+"
<b>Decimal notation</b>	UNA3	M an1	<b>M</b>		Default value: "."
<b>Release character</b>	UNA4	M an1	<b>M</b>		Default value: "?"
<b>Reserved for future use</b>	UNA5	M an1	<b>M</b>		(Default value: space )
<b>Segment terminator</b>	UNA6	M an1	<b>M</b>		Default value: " ' "
Segment notes:  Segment status: Depending  The use of the UNA segment is mandatory, if character set "A" (UNB,DE0001) is not used. For international EDI the use of character set UNOA is recommended. For national (German) EDI the use of UNOC is reasonable because it contains lower case letters and umlauts.  Example: UNA:+.? ' The UNA segment contains the default service string characters.					

**Heading section**

Segment number: 2

UNB - M 1 - Interchange header					
Description: To start, identify and specify an interchange.					
Business Term	DE	EDIFAC	EAN	* GER	Description
	S001	M	M		
<b>Character set</b>	0001	M a4	M		UNOA = UN/ECE level A UNOB = UN/ECE level B UNOC = UN/ECE level C UNOD = UN/ECE level D UNOE = UN/ECE level E UNOF = UN/ECE level F
<b>Syntax version</b>	0002	M n1	M		3 = Version 3
	S002	M	M		
<b>Identification of the sender of the transmission file</b>	0004	M an..35	M		= Global Location Number (GLN)
	0007	C an..4	R		14 = GS1
<b>Address for reverse routing</b>	0008	C an..14	O		See note
	S003	M	M		
<b>Identification of the receiver of the transmission file</b>	0010	M an..35	M		= Global Location Number (GLN)
	0007	C an..4	R		14 = GS1
<b>Routing address</b>	0014	C an..14	O		See note
	S004	M	M		
<b>File creation date</b>	0017	M n6	M		= Date format JJMMTT
<b>File creation time</b>	0019	M n4	M		= Time format HHMM
<b>Interchange control reference, beginning</b>	0020	M an..14	M		= Unique senders reference
	S005	C	O		
<b>Password interchange</b>	0022	M an..14	M		
	0025	C an2	O		AA = Reference BB = Password
<b>Application reference</b>	0026	C an..14	O		Message type if the transmission file contains only one message type
	0029	C a1	O		A = Highest priority
<b>Acknowledgement request</b>	0031	C n1	O		
<b>EANCOM</b>	0032	C an..35	O	R	= EANCOM... EDIFACT subset identification (see note)
<b>Test indicator</b>	0035	C n1	O		1 = Interchange is a test

Segment notes:

Segment status: Mandatory

This segment is used to envelope the interchange, as well as to identify both, the party to whom the interchange is sent and the party who has sent the interchange.

For international EDI the use of character set UNOA is recommended. For national (German) EDI the use of UNOC is reasonable because it contains lower case letters and umlauts.

Note DE 0008:

The address for reverse routing is provided by the interchange sender to inform the interchange recipient of the address within the sender's (source) system to which responding interchanges must be sent. It is recommended that the GLN be used for this purpose.

Note DE 0014:

The routing address is used to identify the receiver, if a provider adds service values for the actual receiver (e.g. consolidated companies, corporate group). The use of the identification system (e.g. GLN) has to be agreed bilaterally.

Note DE 0020:

This data element must contain a consistent sequential number per interchange between sender and receiver of the transmission.

Note DE 0032:

This data element is used to identify any underlying agreements which control the exchange of data. Within EANCOM, the identity of such agreements must start with the letters 'EANCOM', the remaining characters within the data element being filled according to bilateral agreements.

Example: UNB+UNOC:3+4012345000009:14:4012345000016+4000004000002:14:4000004000095+151013:1043+4711+++++EANCOM+1'

The EANCOM interchange with reference 4711 dated 13.10.2015, 10 h 43 is sent by the issuer identified with GLN 4012345000009 to the receiver identified with GLN 4000004000002.



### Heading section

Segment number: 3

<b>UNH</b> - M 1 - Message header						
Description: To head, identify and specify a message.						
Business Term	DE	EDIFACT	EAN	*	GER	Description
<b>Message reference number</b>	0062	M an..14	<b>M</b>			Sender's unique message reference. Sequence number of messages in the interchange. DE 0062 in UNT will have the same value. Generated by the sender.
	S009	M	<b>M</b>			
	0065	M an..6	<b>M</b>	*		SLSRPT = Sales data report message
	0052	M an..3	<b>M</b>	*		D = Draft version/UN/EDIFACT Directory
	0054	M an..3	<b>M</b>	*		01B = Release 2001 - B
	0051	M an..2	<b>M</b>	*		UN = UN/CEFACT
	0057	C an..6	<b>R</b>	*		EAN007 = GS1 version control number (GS1 Code)
Segment notes:						
Segment status: Mandatory						
This segment is used to head, identify and specify a message.						
Example: UNH+ME000001+SLSRPT:D:01B:UN:EAN007' The reference number of the SLSRPT message is ME000001.						

**Heading section**

Segment number: 4

<b>BGM</b> - M 1 - Beginning of message						
Description: To indicate the type and function of a message and to transmit the identifying number.						
<b>Business Term</b>	<b>DE</b>	<b>EDIFACT</b>	<b>EAN</b>	<b>*</b>	<b>GER</b>	<b>Description</b>
	C002	C	<b>R</b>			
	1001	C an..3	<b>R</b>	*		73E = Sales data report (GS1 Code)
	1131	C an..17	<b>N</b>			
	3055	C an..3	<b>R</b>	*		9 = GS1
<b>Process variant, coded</b>	1000	C an..35	<b>O</b>			This data element indicates the variant of the process model textile: "Business Model" on the website of GS1 Netherlands.
	C106	C	<b>R</b>			
<b>Document Number</b>	1004	C an..35	<b>R</b>			Document number assigned by sender
	1225	C an..3	<b>R</b>	*		1 = Cancellation 9 = Original
Segment notes: Segment status: Mandatory						
This segment is used to indicate the type and function of a message and to transmit the identifying number. The use of DE 1000 must be mutually agreed between the data exchanging parties.						
Example: BGM+73E::9:FM100+87441+9' The document number is 87441.						

**Heading section**

Segment number: 5

<b>DTM</b> - M 5 - Date/time/period						
Description: To specify date, and/or time, or period.						
Business Term	DE	EDIFACT	EAN	*	GER	Description
	C507	M	<b>M</b>			
	2005	Man..3	<b>M</b>	*		137 = Document/message date/time
<b>Creation date</b>	2380	Can..35	<b>R</b>			
	2379	Can..3	<b>R</b>			102 = CCYYMMDD 203 = CCYYMMDDHHMM
Segment notes:						
Segment status: Mandatory						
Identification of the 'Document/message date/time' (code value 137) is mandatory in the sales data report message.						
Example: DTM+137:20150901:102' The message was created on 01.09.2015						

**Heading section**

Segment number: 6

<b>DTM</b> - M 5 - Date/time/period						
Description: To specify date, and/or time, or period.						
Business Term	DE	EDIFACT	EAN	*	GER	Description
	C507	M	<b>M</b>			
	2005	M an..3	<b>M</b>	*		90 = Report start date
<b>Reporting period, start</b>	2380	C an..35	<b>R</b>			
	2379	C an..3	<b>R</b>			102 = CCYYMMDD 203 = CCYYMMDDHHMM 615 = YYWW
Segment notes:						
Segment status: Depending						
DTM segment is used to specify date, and/or time, or period.						
Example: DTM+90:20150801:102' 01.08.2015 is the start date of the reporting period.						

**Heading section**

Segment number: 7

<b>DTM</b> - M 5 - Date/time/period						
Description: To specify date, and/or time, or period.						
Business Term	DE	EDIFACT	EAN	*	GER	Description
	C507	M	<b>M</b>			
	2005	M an..3	<b>M</b>	*		91 = Report end date
<b>Reporting period, end</b>	2380	C an..35	<b>R</b>			
	2379	C an..3	<b>R</b>			102 = CCYYMMDD 203 = CCYYMMDDHHMM 615 = YYWW
Segment notes:						
Segment status: Depending						
DTM segment is used to specify date, and/or time, or period.						
Example: DTM+91:20150831:102' 31.08.2015 is the end date of the reporting period.						

**Heading section**

Segment number: 8

<b>DTM</b> - M 5 - Date/time/period						
Description: To specify date, and/or time, or period.						
Business Term	DE	EDIFACT	EAN	*	GER	Description
	C507	M	<b>M</b>			
	2005	M an..3	<b>M</b>	*		356 = Sales date, and or time, and or period
<b>Reporting period</b>	2380	C an..35	<b>R</b>			
	2379	C an..3	<b>R</b>			102 = CCYYMMDD 203 = CCYYMMDDHHMM 718 = CCYYMMDDCCYYMMDD
Segment notes:						
Segment status: Depending						
DTM segment is used to specify date, and/or time, or period. This segment can be used alternatively (!) to the 2 previous segments.						
Example: DTM+356:2015080120150831:718' The reporting period is 01.08.2015 to 31.08.2015.						

**Heading section**

Segment number: 9

<b>SG2</b>	- M	5 - NAD				
<b>NAD</b>	- M	1 - Name and address				
Description:						
To specify the name/address and their related function by C082 only.						
Business Term	DE	EDIFACT	EAN	*	GER	Description
	3035	M an..3	<b>M</b>			SU = <b>Supplier</b>
	C082	C	<b>A</b>		<b>R</b>	
<b>Supplier/message receiver identification</b>	3039	M an..35	<b>M</b>			Global Location Number (GLN) - Format n13
	1131	C an..17	<b>N</b>			
	3055	C an..3	<b>R</b>	*		9 = <b>GS1</b>
Segment notes:						
Segment status: Mandatory						
The supplier/message receiver is identified by GLN.						
Example: NAD+SU+4089876511113::9' The supplier is identified by GLN 4089876511113.						

**Heading section**

Segment number: 10

<b>SG2</b>	- M	5 - NAD-SG4				
<b>NAD</b>	- M	1 - Name and address				
Description: To specify the name/address and their related function, either by C082 only and/or unstructured by C058.						
Business Term	DE	EDIFACT	EAN	*	GER	Description
	3035	M an..3	<b>M</b>			BY = Buyer
	C082	C	<b>A</b>		<b>R</b>	
<b>Identification of buyer/ message sender</b>	3039	M an..35	<b>M</b>			Global Location Number (GLN)- Format n13
	1131	C an..17	<b>N</b>			
	3055	C an..3	<b>R</b>	*		9 = GS1
	C058	C	<b>O</b>			This composite may only be used to fulfill the requirements of directive 2003/58/EG, article 4. If applicable the message sender gets the possibility to give the relevant statements at this place.
	3124	M an..35	<b>M</b>			
	3124	C an..35	<b>O</b>			
	3124	C an..35	<b>O</b>			
	3124	C an..35	<b>O</b>			
	3124	C an..35	<b>O</b>			
Segment notes:						
Segment status: Mandatory						
The buyer/message sender is identified by GLN.						
Example: NAD+BY+4071615111111::9+X:X:X:X:X' The buyer/message sender is identified by GLN 4071615111111.						



**Heading section**

Segment number: 11

<b>SG2</b>	- M	5 - NAD-SG3-SG4				
<b>SG3</b>	- C	5 - CTA				
<b>CTA</b>	- M	1 - Contact information				
Description:						
To identify a person or a department to whom communication should be directed.						
Business Term	DE	EDIFACT	EAN	*	GER	Description
	3139	C an..3	<b>R</b>			PD = <b>Purchasing contact</b>
	C056	C	<b>O</b>		<b>R</b>	
	3413	C an..17	<b>O</b>			
<b>Contact person at corporate office</b>	3412	C an..35	<b>O</b>		<b>R</b>	
Segment notes:						
Segment status: Conditional						
This segment is used to identify the department and/or person within the party specified in the NAD. The GLN is particularly suitable for that purpose.						
Example: CTA+PD+:R.Waldorf' Purchasing contact person is R. Waldorf.						

**Heading section**

Segment number: 12

<b>SG2</b>	- M	5 - NAD-SG3-SG4				
<b>SG4</b>	- C	9 - RFF				
<b>RFF</b>	- M	1 - Reference				
Description: To specify a reference.						
Business Term	DE	EDIFACT	EAN	*	GER	Description
	C506	M	<b>M</b>			
	1153	M an..3	<b>M</b>			IT = Internal customer number
<b>Internal customer number of corporate office</b>	1154	C an..70	<b>R</b>			
Segment notes:						
Segment status: Conditional						
The RFF segment following the NAD segment can specify the customer number of suppliers system.						
If no functional or organizational differences are necessary within one company only the GLN is used for communication purposes, if applicable the receiver links within the in-house system. Additional identifications should be agreed only in those cases when different functional entities need to be distinguished at one location.						
Example: RFF+IT:1515-234-4' The internal customer number of the sender is 1515-234-4 in the receivers system.						

**Heading section**

Segment number: 13

<b>SG5</b>	- C	5 - CUX				
<b>CUX</b>	- M	1 - Currencies				
Description: To specify currencies used in the transaction and relevant details for the rate of exchange.						
<b>Business Term</b>	<b>DE</b>	<b>EDIFACT</b>	<b>EAN</b>	<b>*</b>	<b>GER</b>	<b>Description</b>
	C504	C	<b>R</b>			
	6347	M an..3	<b>M</b>	*		2 = Reference currency
<b>Currency</b>	6345	C an..3	<b>R</b>			ISO 4217 three alpha EUR = Euro
	6343	C an..3	<b>R</b>			11 = Payment currency
	C504	C	<b>D</b>			
	6347	M an..3	<b>M</b>	*		3 = Target currency
	6345	C an..3	<b>R</b>			ISO 4217 three alpha
	6343	C an..3	<b>R</b>			11 = Payment currency
	6348	C n..4	<b>O</b>			
<b>Rate of exchange</b>	5402	C n..12	<b>D</b>			
Segment notes:						
Segment status: Depending, must only be used if prices or amounts are content of the message.						
When specifying Reference and Target Currencies for international trade, one occurrence of CUX is all that is required. The reference currency is identified in the first occurrence of composite C504, with the target currency specified in the second occurrence of C504. The rate of exchange between the two is detailed in DE 5402.						
Example: CUX+2:EUR:11+3:USD:11+0.90243' The basic currency is EURO.						

**Detail section**

Segment number: 14

<b>SG6</b>	- C	20000	- LOC-DTM-SG8
<b>LOC</b>	- M	1	- Place/location identification
Description: To identify a place or a location and/or related locations.			
Business Term	DE	EDIFACT	EAN * GER Description
	3227	M an..3	<b>M</b> 162 = Place or location of sale
	C517	C	<b>A</b> <b>R</b>
<b>Identification of location of sale</b>	3225	C an..25	<b>A</b> <b>R</b> Global Location Number (GLN)- Format n13
	1131	C an..17	<b>O</b>
	3055	C an..3	<b>D</b> <b>R</b> 9 = GS1
Segment notes:  Segment status: Mandatory  The LOC segment triggers the detail section of the message. Segment group 6 is repeated for every location where sales are reported. tlet for which sales data are reported is identified by GLN.  Example: LOC+162+5099104000226::9' The outlet is identified by GLN 5099104000226.			

**Detail section**

Segment number: 15

<b>SG6</b>	- C	200000	- LOC-DTM-SG8
<b>DTM</b>	- C	5	- Date/time/period
Description: To specify date, and/or time, or period.			
Business Term	DE	EDIFACT	EAN * GER Description
	C507	M	<b>M</b>
	2005	M an..3	<b>M</b> * 356 = Sales date, and or time, and or period
<b>Sales period outlet</b>	2380	C an..35	<b>R</b>
	2379	C an..3	<b>R</b> 102 = CCYYMMDD 203 = CCYYMMDDHHMM 718 = CCYYMMDDCCYYMMDD
Segment notes:  Segment status: Conditional  The segment is used to provide a date or period when goods have been sold, which are identified in the following LIN group (segment group 8). The DTM segment can be used to specify the weekly sales in a monthly report.  This segment is not necessary if the date or period is identical with the specification at header level.  Example: DTM+356:20150808:102' The date of sale is 08.08.2015.			

**Detail section**

Segment number: 16

<b>SG6</b>	- C	200000	- LOC-DTM-SG8
<b>SG8</b>	- C	200000	- LIN-PIA-RFF-ALI-MOA-SG9-SG10
<b>LIN</b>	- M	1	- Line item
Description: To identify a line item and configuration.			
Business Term	DE	EDIFACT	EAN * GER Description
<b>Line item number</b>	1082	C an..6	<b>R</b> Application generated number of the item lines within the message
	1229	C an..3	<b>N</b>
	C212	C	<b>D</b>
<b>GTIN Article identification</b>	7140	C an..35	<b>R</b> GTIN, Format n..14
	7143	C an..3	<b>R *</b> SRV = <b>GS1 Global Trade Item Number</b>
Segment notes:  Segment status: Mandatory  In this segment the GTIN is indicated as item identification.  Example: LIN+1++4056786542384:SRV' The product for that sales are being reported is identified by GTIN 4056786542384.			

**Detail section**

Segment number: 17

<b>SG6</b>	- C	200000 - LOC-DTM-SG8
<b>SG8</b>	- C	200000 - LIN-PIA-IMD-RFF-ALI-MOA-SG9-PAI-SG10
<b>PIA</b>	- C	5 - Additional product id

Description:

To specify additional item identification codes.

Business Term	DE	EDIFACT	EAN	*	GER	Description
	4347	M an..3	<b>M</b>	*		1 = Additional identification
	C212	M	<b>M</b>			
<b>Buyers's item number</b>	7140	C an..35	<b>R</b>			
	7143	C an..3	<b>R</b>			IN = Buyer's item number

Segment notes:

Segment status: Conditional

This segment is used to advise the buyer's article number additionally to GTIN.

Example: PIA+1+7788:IN'

**Detail section**

Segment number: 18

<b>SG6</b>	- C	200000 - LOC-DTM-SG8
<b>SG8</b>	- C	200000 - LIN-PIA-IMD-RFF-ALI-MOA-SG9-PAI-SG10
<b>PIA</b>	- C	5 - Additional product id

Description:

To specify additional item identification codes.

Business Term	DE	EDIFACT	EAN	*	GER	Description
	4347	M an..3	<b>M</b>	*		1 = Additional identification
	C212	M	<b>M</b>			
<b>GFK code</b>	7140	C an..35	<b>R</b>			
	7143	C an..3	<b>R</b>			CG = Commodity grouping

Segment notes:

Segment status: Conditional

This segment is used to advise the GFK code additionally to GTIN.

Example: PIA+1+0123456789:CG'



**Detail section**

Segment number: 19

<b>SG6</b>	- C	200000	- LOC-DTM-SG8
<b>SG8</b>	- C	200000	- LIN-PIA-IMD-RFF-ALI-MOA-SG9-PAI-SG10
<b>PIA</b>	- C	5	- Additional product id
Description:			
To specify additional item identification codes.			
Business Term	DE	EDIFACT	EAN * GER Description
	4347	M an..3	<b>M</b> * 1 = Additional identification
	C212	M	<b>M</b>
<b>Supplier's item number</b>	7140	C an..35	<b>R</b>
	7143	C an..3	<b>R</b> SA = Supplier's article number
Segment notes:			
Segment status: Conditional			
This segment is used to advise the suppliers article number additionally to GTIN.			
Example: PIA+1+988624AGb:SA'			

**Detail section**

Segment number: 20

<b>SG6</b>	- C	200000	- LOC-DTM-SG8
<b>SG8</b>	- C	200000	- LIN-PIA-IMD-RFF-ALI-MOA-SG9-PAI-SG10
<b>IMD</b>	- C	5	- Item description
Description:			
To describe an item in either an industry or free format.			
Business Term	DE	EDIFACT	EAN * GER Description
	7077	C an..3	<b>O</b> * <b>R</b> F = Free-form
	C272	C	<b>O</b> <b>R</b>
	7081	C an..3	<b>R</b>
	1131	C an..17	<b>O</b> <b>N</b>
	3055	C an..3	<b>D</b> *
	C273	C	<b>R</b>
	7009	C an..17	<b>O</b> <b>R</b> CU = Consumer unit
	1131	C an..17	<b>O</b>
	3055	C an..3	<b>D</b> <b>R</b> 92 = Assigned by buyer or buyer's agent
<b>Buyer's item description</b>	7008	C an..256	<b>O</b> <b>R</b>
	7008	C an..256	<b>O</b> <b>O</b>
	3453	C an..3	<b>O</b> <b>R</b> ISO 639 2-Alpha Code, e.g. NL = Dutch EN = English
Segment notes:			
Segment status: Conditional			
This segment is used to provide the buyer's.			
Example: IMD+F++CU::92:BUYERS DESCRIPTION OF ARTICLE::EN'			

**Detail section**

Segment number: 21

<b>SG6</b>	- C	200000	- LOC-DTM-SG8	
<b>SG8</b>	- C	200000	- LIN-PIA-IMD-RFF-ALI-MOA-SG9-PAI-SG10	
<b>IMD</b>	- C	5	- Item description	
Description:				
To describe an item in either an industry or free format.				
Business Term	DE	EDIFACT	EAN * GER	Description
	7077	C an..3	O * R	F = Free-form
	C272	C	O R	
	7081	C an..3	R	35 = Colour
	1131	C an..17	O N	
	3055	C an..3	D * N	
	C273	C	R	
	7009	C an..17	O D	
	1131	C an..17	O	
	3055	C an..3	D N	
<b>Colour description</b>	7008	C an..256	O R	
	7008	C an..256	O O	
	3453	C an..3	O R	ISO 639 2-Alpha Code, e.g. NL = Dutch EN = English
Segment notes:				
Segment status: Conditional				
This segment is used to provide information about the colour if not coded in the GTIN. The colour description is given in clear text by use of code value F in DE 7077.				
Example: IMD+F+35+:::Blauw wit gestreept:::NL'				

**Detail section**

Segment number: 22

<b>SG6</b>	- C	200000	- LOC-DTM-SG8	
<b>SG8</b>	- C	200000	- LIN-PIA-IMD-RFF-ALI-MOA-SG9-PAI-SG10	
<b>IMD</b>	- C	5	- Item description	
Description:				
To describe an item in either an industry or free format.				
Business Term	DE	EDIFACT	EAN * GER	Description
	7077	C an..3	<b>O</b> * <b>R</b>	F = Free-form
	C272	C	<b>O</b> <b>R</b>	
	7081	C an..3	<b>R</b>	98 = Size
	1131	C an..17	<b>O</b> <b>N</b>	
	3055	C an..3	<b>D</b> * <b>N</b>	
	C273	C	<b>R</b>	
	7009	C an..17	<b>O</b> <b>D</b>	
	1131	C an..17	<b>O</b>	
	3055	C an..3	<b>D</b> <b>N</b>	
<b>Size description</b>	7008	C an..256	<b>O</b> <b>R</b>	
	7008	C an..256	<b>O</b> <b>O</b>	
	3453	C an..3	<b>O</b> <b>R</b>	ISO 639 2-Alpha Code, e.g. NL = Dutch EN = English
Segment notes:				
Segment status: Conditional				
This segment is used to provide the size.				
Example: IMD+F+98+:::Extra small:::EN'				

**Detail section**

Segment number: 23

<b>SG6</b>	- C	200000	- LOC-DTM-SG8
<b>SG8</b>	- C	200000	- LIN-PIA-IMD-RFF-ALI-MOA-SG9-PAI-SG10
<b>RFF</b>	- C	5	- Reference

Description:

A segment for referencing documents or other numbers pertinent to the line item.

Business Term	DE	EDIFACT	EAN	*	GER	Description
	C506	M	<b>M</b>			
	1153	M an..3	<b>M</b>			ZZ2 = Cash register (GS1 NL Code)
<b>Cash register number</b>	1154	C an..70	<b>R</b>			

Segment notes:

Segment status: Conditional

This segment is used to identify the number of the cash register.

Example: RFF+ZZ2:123-01'

**Detail section**

Segment number: 24

<b>SG6</b>	- C	200000	- LOC-DTM-SG8
<b>SG8</b>	- C	200000	- LIN-PIA-IMD-RFF-ALI-MOA-SG9-PAI-SG10
<b>RFF</b>	- C	5	- Reference

Description:

A segment for referencing documents or other numbers pertinent to the line item.

Business Term	DE	EDIFACT	EAN	*	GER	Description
	C506	M	<b>M</b>			
	1153	M an..3	<b>M</b>			ZZ3 = Employee number (GS1 NL Code)
<b>Employee number</b>	1154	C an..70	<b>R</b>			

Segment notes:

Segment status: Conditional

This segment is used to identify the employee number.

Example: RFF+ZZ3:12345'

**Detail section**

Segment number: 25

<b>SG6</b>	- C	200000	- LOC-DTM-SG8
<b>SG8</b>	- C	200000	- LIN-PIA-IMD-RFF-ALI-MOA-SG9-PAI-SG10
<b>RFF</b>	- C	5	- Reference
Description:			
A segment for referencing documents or other numbers pertinent to the line item.			
Business Term	DE	EDIFACT	EAN * GER Description
	C506	M	<b>M</b>
	1153	M an..3	<b>M</b> ZZ4 = Return reason (GS1 NL Code)
<b>Return reason</b>	1154	C an..70	<b>R</b>
Segment notes:			
Segment status: Conditional			
This segment is used to identify the employee number.			
Example: RFF+ZZ4:Nat geworden tijdens transport'			

**Detail section**

Segment number: 26

<b>SG6</b>	- C	200000	- LOC-DTM-SG8
<b>SG8</b>	- C	200000	- LIN-PIA-IMD-RFF-ALI-MOA-SG9-PAI-SG10
<b>RFF</b>	- C	5	- Reference

Description:

A segment for referencing documents or other numbers pertinent to the line item.

Business Term	DE	EDIFACT	EAN	*	GER	Description
	C506	M	<b>M</b>			
	1153	M an..3	<b>M</b>			ZZ1 = Stock location (GS1 NL Code)
<b>Identification of stock location</b>	1154	C an..70	<b>R</b>			

Segment notes:

Segment status: Conditional

This segment is used to identify the stock location.

Example: RFF+ZZ1:8712345000011'



**Detail section**

Segment number: 27

<b>SG6</b>	- C	200000	- LOC-DTM-SG8
<b>SG8</b>	- C	200000	- LIN-PIA-IMD-RFF-ALI-MOA-SG9-PAI-SG10
<b>RFF</b>	- C	5	- Reference

Description:

A segment for referencing documents or other numbers pertinent to the line item.

Business Term	DE	EDIFACT	EAN	*	GER	Description
	C506	M	<b>M</b>			
	1153	M an..3	<b>M</b>			UO = Ultimate customer's order number
<b>Online order number</b>	1154	C an..70	<b>R</b>			

Segment notes:

Segment status: Conditional

This segment is used to identify the customer's order number (both receipt number and online order number).

Example: RFF+UO:12345676'

**Detail section**

Segment number: 28

<b>SG6</b>	- C	200000	-	LOC-DTM-SG8	
<b>SG8</b>	- C	200000	-	LIN-PIA-RFF-ALI-MOA-SG9-SG10	
<b>MOA</b>	- C	5	-	Monetary amount	
Description: To specify a monetary amount.					
Business Term	DE	EDIFACT	EAN	* GER	Description
	C516	M	<b>M</b>		
	5025	M an..3	<b>M</b>		203 = Line item amount
<b>Line amount</b>	5004	C n..35	<b>R</b>		
Segment notes: Segment status: Conditional To indicate the retail value of the current article within the specified period. Example: MOA+203:134.5' The line amount is 134,50.					

**Detail section**

Segment number: 29

<b>SG6</b>	- C	200000	-	LOC-DTM-SG8	
<b>SG8</b>	- C	200000	-	LIN-PIA-RFF-ALI-MOA-SG9-SG10	
<b>MOA</b>	- C	5	-	Monetary amount	
Description: To specify a monetary amount.					
Business Term	DE	EDIFACT	EAN	* GER	Description
	C516	M	<b>M</b>		
	5025	M an..3	<b>M</b>		8 = Allowance or charge amount
<b>Allowance amount</b>	5004	C n..35	<b>R</b>		
Segment notes:  Segment status: Conditional  To indicate the allowance amount.  Example: MOA+8:13.45' The allowance amount is 13,45.					

**Detail section**

Segment number: 30

<b>SG6</b>	- C	200000	- LOC-DTM-SG8	
<b>SG8</b>	- C	200000	- LIN-PIA-RFF-ALI-MOA-SG9-SG10	
<b>SG9</b>	- C	999	- PRI	
<b>PRI</b>	- M	1	- Price details	
Description: To specify price information.				
Business Term	DE	EDIFACT	EAN * GER	Description
	C509	C	<b>R</b>	
	5125	M an..3	<b>M</b>	1E = Calculation net - including taxes (GS1 Code)
<b>Retail price</b>	5118	C n..15	<b>R</b>	
	5375	C an..3	<b>O</b>	
	5387	C an..3	<b>O</b>	<b>R</b> RTP = Retail price Retail price DAP = Dealer adjusted price Price including individual discount DPR = Discount price Price including a staff discount PRP = Promotional price Price with miscellaneous discount
Segment notes:  Segment status: Conditional  This segment is used to provide the price by which the current article was sold.  Example: PRI+1E:12.45::RTP' The retail price is 12,45.				

**Detail section**

Segment number: 31

<b>SG6</b>	- C	200000	- LOC-DTM-SG8
<b>SG8</b>	- C	200000	- LIN-PIA-RFF-ALI-MOA-SG9-SG10
<b>SG9</b>	- C	999	- PRI
<b>PRI</b>	- M	1	- Price details

Description:

To specify price information.

Business Term	DE	EDIFACT	EAN	*	GER	Description
	C509	C	<b>R</b>			
	5125	M an..3	<b>M</b>			AAB= Calculation gross
<b>Gross selling article price exclusive VAT and discounts</b>	5118	C n..15	<b>R</b>			
	5375	C an..3	<b>O</b>			
	5387	C an..3	<b>O</b>			

Segment notes:

Segment status: Conditional

To indicate the gross selling article price exclusive VAT and discounts.

Example: PRI+AAB:18.60'

**Detail section**

Segment number: 32

<b>SG6</b>	- C	200000	- LOC-DTM-SG8
<b>SG8</b>	- C	200000	- LIN-PIA-RFF-ALI-MOA-SG9-SG10
<b>SG9</b>	- C	999	- PRI
<b>PRI</b>	- M	1	- Price details

Description:

To specify price information.

Business Term	DE	EDIFACT	EAN	*	GER	Description
	C509	C	<b>R</b>			
	5125	M an..3	<b>M</b>			AAE = Information price, excluding allowances or charges, including taxes
<b>Gross selling article price inclusive VAT and discounts</b>	5118	C n..15	<b>R</b>			
	5375	C an..3	<b>O</b>			
	5387	C an..3	<b>O</b>		<b>R</b>	GRP = Gross unit price

Segment notes:

Segment status: Conditional

To indicate the gross selling article price inclusive VAT and discounts.

Example: PRI+AAE:22.50::GRP'

**Detail section**

Segment number: 33

<b>SG6</b>	- C	200000	- LOC-DTM-SG8
<b>SG8</b>	- C	200000	- LIN-PIA-RFF-ALI-MOA-SG9-SG10
<b>SG9</b>	- C	999	- PRI
<b>PRI</b>	- M	1	- Price details

Description:

To specify price information.

Business Term	DE	EDIFACT	EAN	*	GER	Description
	C509	C	<b>R</b>			
	5125	M an..3	<b>M</b>			AAE = Information price, excluding allowances or charges, including taxes
<b>Net selling article price inclusive VAT</b>	5118	C n..15	<b>R</b>			
	5375	C an..3	<b>O</b>			
	5387	C an..3	<b>O</b>		<b>R</b>	NTP = Net unit price

Segment notes:

Segment status: Conditional

To indicate the net selling article price inclusive VAT.

Example: PRI+AAE:15.75::NTP'

**Detail section**

Segment number: 34

<b>SG6</b>	- C	200000	- LOC-DTM-SG8
<b>SG8</b>	- C	200000	- LIN-PIA-RFF-ALI-MOA-SG9-SG10
<b>SG9</b>	- C	999	- PRI
<b>PRI</b>	- M	1	- Price details

Description:

To specify price information.

Business Term	DE	EDIFACT	EAN	*	GER	Description
	C509	C	<b>R</b>			
	5125	M an..3	<b>M</b>			AAA = Calculation net
<b>Net selling article price exclusive VAT</b>	5118	C n..15	<b>R</b>			
	5375	C an..3	<b>O</b>			
	5387	C an..3	<b>O</b>			

Segment notes:

Segment status: Conditional

To indicate the net selling article price exclusive VAT.

Example: PRI+AAA:13.02'



**Detail section**

Segment number: 35

<b>SG6</b>	- C	20000	- LOC-DTM-SG8
<b>SG8</b>	- C	20000	- LIN-PIA-RFF-ALI-MOA-SG9-SG10
<b>SG10</b>	- C	999	- QTY-NAD
<b>QTY</b>	- M	1	- Quantity
Description: To specify a pertinent quantity.			
Business Term	DE	EDIFACT	EAN * GER Description
	C186	M	<b>M</b>
	6063	M an..3	<b>M</b> * 153 = <b>Statistical sales quantity</b>
<b>Sold quantity</b>	6060	M an..35	<b>M</b> Use only numeric values.
	6411	C an..3	<b>D</b> KGM = <b>kilogram</b> For more codes see EANCOM code list.
Segment notes:  Segment status: Mandatory  The QTY segment is used to specify the sold quantity for the current item, which was identified in the LIN segment.  DE 6411 is only used, if the article is a variable quantity article. Default value is piece.  Example: QTY+153:24' The current sold quantity is 24.			

**Detail section**

Segment number: 36

<b>SG6</b>	- C	200000	- LOC-DTM-SG8
<b>SG8</b>	- C	200000	- LIN-PIA-RFF-ALI-MOA-SG9-SG10
<b>SG10</b>	- C	999	- QTY
<b>QTY</b>	- M	1	- Quantity

Description:

To specify a pertinent quantity.

Business Term	DE	EDIFACT	EAN	*	GER	Description
	C186	M	<b>M</b>			
	6063	M an..3	<b>M</b>	*		210 = Returned by consumer quantity
<b>Quantity returned by consumer</b>	6060	M an..35	<b>M</b>			Use only numeric values.
	6411	C an..3	<b>D</b>			KGM = kilogram For more codes see EANCOM code list.

Segment notes:

Segment status: Conditional

The QTY segment is used to specify the quantity by the consumer for the current item, which was identified in the LIN segment.

DE 6411 is only used, if the article is a variable quantity article. Default value is piece.

Example: QTY+210:2'  
The quantity returned by the consumer is 2.

**End of message**

Segment number: 37

<b>UNS</b> - M 1 - Section control					
Description: To separate header, detail and summary sections of a message.					
Notes: 1. To be used by message designers when required to avoid ambiguities. Mandatory only if specified for the type of message concerned.					
Business Term	DE	EDIFACT	EAN	* GER	Description
	0081	M a1	M		S = Detail/summary section separation
Segment notes: Segment status: Mandatory This segment is used to identify the break between the message detail and message trailer sections. Example: UNS+S' Separation of detail and summary section					

**End of message**

Segment number: 38

<b>UNT</b> - M 1 - Message trailer						
Description: To end and check the completeness of a message.						
Business Term	DE	EDIFACT	EAN	*	GER	Description
<b>Number of segments within the message</b>	0074	M n..6	<b>M</b>			
	0062	M an..14	<b>M</b>			The message reference numbered detailed here must equal the one specified in DE 0062 of the UNH segment.
Segment notes:  Segment status: Mandatory  This segment is mandatory in UN/EDIFACT. It must always be the last segment in the message.  Example: UNT+39+ME000001' The message contains 39 segments						

**End of message**

Segment number: 39

<b>UNZ</b> - M 1 - Interchange trailer						
Description: To end and check the completeness of an interchange.						
<b>Business Term</b>	<b>DE</b>	<b>EDIFACT</b>	<b>EAN</b>	<b>*</b>	<b>GER</b>	<b>Description</b>
<b>End of the transmission file, Number of messages or message groups</b>	0036	M n..6	<b>M</b>			Number of messages or message groups in the transmission file.
<b>Interchange control reference, end</b>	0020	M an..14	<b>M</b>			Interchange control reference, identical with UNB DE 0020.
<p>Segment notes:</p> <p>Segment status: Mandatory</p> <p>The UNZ segment is the last segment of the transmission file.</p> <p>Note DE 0036: If functional groups are not used, this is the number of messages within the interchange.</p> <p>Example: UNZ+1+4711' The transmission file contains 1 message.</p>						

## 5 SLSRPT message example

Please note that EANCOM® 2002 message examples are intended to describe all possible constellations of segment use. They do not necessarily reflect the actual requirements of a business process.

Please also note that for technical reasons the examples can contain component data element separators, which would normally be represented as data element separators in original messages.

```
UNA:+.? '  
UNB+UNOC:3+4012345000009:14+4000004000002:14+151013:1043+4711+++++EANCOM+1'  
UNH+ME000001+SLSRPT:D:01B:UN:EAN007'  
BGM+73E::9:FM100+87441+9'  
DTM+137:20150901:102'  
DTM+90:20150801:102'  
DTM+91:20150831:102'  
NAD+SU+40898765111113::9'  
NAD+BY+40716151111111::9'  
CTA+PD+:R.Waldorf'  
RFF+IT:1515-234-4'  
CUX+2:EUR:11'  
LOC+162+5099104000226::9'  
DTM+356:20150808:102'  
LIN+1+++4056786542384:SRV'  
PIA+1+7788:IN'  
PIA+1+0123456789:CG'  
PIA+1+988624AGb:SA'  
IMD+F++CU::92:BUYERS DESCRIPTION OF ARTICLE::EN'  
IMD+F+35+:::Blauw wit gestrept::NL'  
IMD+F+98+:::Extra small::EN'  
RFF+ZZ2:123-01'  
RFF+ZZ3:12345'  
RFF+ZZ4:Nat geworden tijdens transport'  
RFF+ZZ1:8712345000011'  
RFF+UO:12345676'  
MOA+203:134.5'  
MOA+8:13.45'  
PRI+1E:12.45::RTP'  
PRI+AAB:18.60'  
PRI+AAE:22.50::GRP'  
PRI+AAE:15.75::NTP'  
PRI+AAA:13.02'  
QTY+153:24'  
QTY+210:2'  
UNS+S'  
UNT+35+ME000001'  
UNZ+1+4711'
```